

RAD51B Rabbit pAb

货号: **AYP16533**

产品信息

| | |
|-------|--|
| 反应 | Mouse,Rat |
| 宿主 | Rabbit |
| 克隆性 | Polyclonal |
| 预测反应 | |
| 应用 | WB |
| 推荐浓度 | WB: 1:500 - 1:2000 |
| 理论分子量 | 25kDa/38kDa/40kDa/42kDa |
| 实测分子量 | 42kDa |
| 形式 | Liquid |
| 保存条件 | Store at -20°C. Avoid freeze / thaw cycles. Buffer: PBS with 0.01% thiomersal,50% glycerol,pH7.3. |
| 偶联物 | Unconjugated |
| 阳性对照 | Mouse kidney,Rat kidney |
| 细胞定位 | Nucleus |
| 纯化 | Affinity purification |

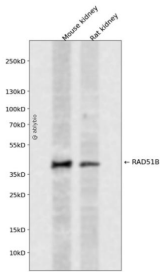
抗原信息

| | |
|------|--|
| 抗原信息 | Recombinant fusion protein containing a sequence corresponding to amino acids 1-384 of human RAD51 B (NP_598193.2). |
| 序列 | MGSKCLKRVGLSQELCDRLSRHQILTQDFLCLSPLELMKVTGLSYRGVHELLCMVSRACAPKMQTAYGIKAQRSADFSP AFLSTTLSALDEALHGGVACGSLTEITGPPGCGKTQFCIMMSILATLPTNMGGLEGAVVYIDTESAFSAERLVEIAESRFPRY FNTEEKLLLTSSKVHLYRELTCDLQRIELEEIIISKGIKLVILDSVASVVRKEFDAQLQGNLKERKFLAREASSLKYLAEE FSIPVILTNQITTHLSGALASQADLVSPADDLSLSEGTSGSSCVIAALGNTWSHSVNTRLILQYLDSEERRQILIAKSPLAPFTS FVYTIKEEGLVLQETTFCSVTQAEINWAPEILPPQPPEQLGLQMCHHTQLIF |

靶点信息

| | |
|-------|---|
| 研究背景 | The protein encoded by this gene is a member of the RAD51 protein family. RAD51 family members are evolutionarily conserved proteins essential for DNA repair by homologous recombination. This protein has been shown to form a stable heterodimer with the family member RAD51C, which further interacts with the other family members, such as RAD51, XRCC2, and XRCC3. Overexpression of this gene was found to cause cell cycle G1 delay and cell apoptosis, which suggested a role of this protein in sensing DNA damage. Rearrangements between this locus and high mobility group AT-hook 2 (HMGA2, GeneID 8091) have been observed in uterine leiomyomata. |
| 基因ID | 5890 |
| 基因名 | RAD51B |
| Swiss | O15315 |
| 别名 | RAD51B;R51H2;RAD51L1;REC2 |

产品验证



Western blot analysis of RAD51B expressed in Mouse kidney,Rat kidney using RAD51B Rabbit pAb at 1:1000. Secondary antibody: HRP Goat Anti-Rabbit IgG (H+L) at 1:5000. Lysates/proteins: 30ug per lane. Blocking buffer: 5% non-fat dry milk in TBST. Detection: ECL Enhanced Kit. Exposure time: 120s.

实验步骤

访问官网浏览详情: www.ablybio.cn