

RLN2 Rabbit pAb

货号: **AYP16532**

产品信息

反应	Human,Rat
宿主	Rabbit
克隆性	Polyclonal
预测反应	
应用	WB IHC
推荐浓度	WB: 1:500 - 1:2000 IHC: 1:50 - 1:200
理论分子量	12kDa/21kDa
实测分子量	21kDa
形式	Liquid
保存条件	Store at -20°C. Avoid freeze / thaw cycles. Buffer: PBS with 0.02% sodium azide,50% glycerol,pH7.3.
偶联物	Unconjugated
阳性对照	22Rv1
细胞定位	Secreted
纯化	Affinity purification

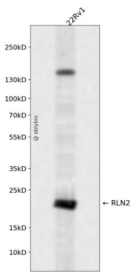
抗原信息

抗原信息	Recombinant fusion protein containing a sequence corresponding to amino acids 25-185 of human RLN2 (NP_604390.1).
序列	DSWMEEVIKLCGRELVRAQIAICGMSTWSKRSLSQEDAPQTPRPVAEIVPSFINKDTETINMMSEFVANLPQELKLTLSSEMQLPALPQLQHQHPVLKDSLLFEFKLIRNRQSEAADSSPSELKYLGLDTHSRKKRQLYSALANKCCHVGCTKRSLARFC

靶点信息

研究背景	This gene encodes a member of the relaxin subfamily and insulin superfamily of peptide hormones. In humans there are three non-allelic relaxin genes. This gene encodes multiple protein isoforms, at least one of which undergoes proteolytic processing. This processing generates relaxin A and B chains that are linked by disulfide bonds to form the mature peptide hormone. This hormone plays a role in the male and female reproductive systems and was initially noted for its role in pregnancy. This protein also plays broader roles in the cardiovascular system, including in the regulation of blood pressure and control of heart rate, and data from animal models shows that this protein may have anti-fibrotic and cardioprotective effects.
基因ID	6019
基因名	RLN2
Swiss	P04090
别名	RLN2;H2;H2-RLX;RLXH2;bA12D24.1.1;bA12D24.1.2;relaxin 2

产品验证



Western blot analysis of RLN2 expressed in 22Rv1 using RLN2 Rabbit pAb at 1:1000. Secondary antibody: HRP Goat Anti-Rabbit IgG (H+L) at 1:5000. Lysates/proteins: 30ug per lane. Blocking buffer: 5% non-fat dry milk in TBST. Detection: ECL Enhanced Kit. Exposure time: 120s.

实验步骤

访问官网浏览详情: www.ablybio.cn