

SSBP1 Rabbit pAb

货号: **AYP16528**

产品信息

反应	Human,Mouse
宿主	Rabbit
克隆性	Polyclonal
预测反应	
应用	WB IF/ICC IP
推荐浓度	WB: 1:500 - 1:2000 IF/ICC: 1:50 - 1:100 IP: 1:50 - 1:200
理论分子量	17kDa
实测分子量	17KDa
形式	Liquid
保存条件	Store at -20°C. Avoid freeze / thaw cycles. Buffer: PBS with 0.02% sodium azide,50% glycerol,pH7.3.
偶联物	Unconjugated
阳性对照	SW620,HL-60,293T,Mouse liver
细胞定位	Mitochondrion,Mitochondrion matrix,mitochondrion nucleoid
纯化	Affinity purification

抗原信息

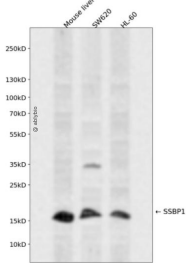
抗原信息	Recombinant fusion protein containing a sequence corresponding to amino acids 1-148 of human SSBP1 (NP_001243442.1).
序列	MFRRPVLQVLRQFVRHESETTTSLVRLERSLNRVHLLGRVGDQPVLRQVEGKNPVTIFSLATNEMWRSRGDSEVYQLGDVSKTTWHRISVFRPGLRDVAYQYVKKGSRIYLEGKIDYGEYMDKNNVRRQATTIADNIIFLSDQTKEKE

靶点信息

研究背景	SSBP1 is a housekeeping gene involved in mitochondrial biogenesis (Tiranti et al., 1995 [PubMed 778999 1]). It is also a subunit of a single-stranded DNA (ssDNA)-binding complex involved in the maintenance of genome stability (Huang et al., 2009) [PubMed 19683501].[supplied by OMIM, Feb 2010]
基因ID	6742

基因名	SSBP1
Swiss	Q04837
别名	SSBP1;Mt-SSB;SOSS-B1;SSBP;mtSSB

产品验证



Western blot analysis of SSBP1 expressed in Mouse liver, SW620, HL-60 using SSBP1 Rabbit pAb at 1:1000. Secondary antibody: HRP Goat Anti-Rabbit IgG (H+L) at 1:5000. Lysates/proteins: 30ug per lane. Blocking buffer: 5% non-fat dry milk in TBST. Detection: ECL Enhanced Kit. Exposure time: 120s.

实验步骤

访问官网浏览详情: www.ablybio.cn