

Delta-sarcoglycan (SGCD) Rabbit pAb

货号: AYP16525

产品信息

反应	Human,Mouse,Rat
宿主	Rabbit
克隆性	Polyclonal
预测反应	
应用	WB IHC IF/ICC
推荐浓度	WB: 1:500 - 1:2000 IHC: 1:50 - 1:100 IF/ICC: 1:50 - 1:100
理论分子量	28kDa/32kDa
实测分子量	37kDa
形式	Liquid
保存条件	Store at -20°C. Avoid freeze / thaw cycles. Buffer: PBS with 0.02% sodium azide,50% glycerol,pH7.3.
偶联物	Unconjugated
阳性对照	Jurkat,THP-1,Mouse heart,Mouse skeletal muscle,Rat heart,Rat skeletal muscle
细胞定位	Cell membrane,Cytoplasm,Single-pass type II membrane protein,cytoskeleton,sarcolemma
纯化	Affinity purification

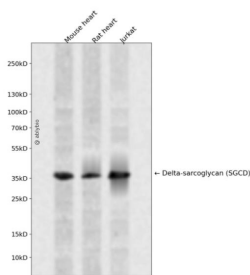
抗原信息

抗原信息	Recombinant fusion protein containing a sequence corresponding to amino acids 61-290 of human Delta-sarcoglycan (Delta-sarcoglycan (SGCD)) (NP_000328.2).
序列	NFTIDGMGNLRITEKGLKLEGDSEFLQPLYAKEIQSRPGNALYFKSARNVTNINLNDQTKVLTQLITGPKAVEAYGKKFEVKT VSGKLLFSADNNEVVVGAERLRVLGAEGTVFPKSIETPNVRADPFKELRLESPTSLVMEAPKGVEINAEAGNMEATCRTEL RLESKDGEIKLDAAKIRLPRLPHGSYTPTGTRQKVFEICVANGRLFLSQAGAGSTCQINTSVCL

靶点信息

研究背景	The protein encoded by this gene is one of the four known components of the sarcoglycan complex, which is a subcomplex of the dystrophin-glycoprotein complex (DGC). DGC forms a link between the F-actin cytoskeleton and the extracellular matrix. This protein is expressed most abundantly in skeletal and cardiac muscle. Mutations in this gene have been associated with autosomal recessive limb-girdle muscular dystrophy and dilated cardiomyopathy. Alternatively spliced transcript variants encoding distinct isoforms have been observed for this gene.
基因ID	6444
基因名	SGCD
Swiss	Q92629
别名	SGCD;35DAG;CMD1L;DAGD;SG-delta;SGCDP;SGD

产品验证



Western blot analysis of Delta-sarcoglycan (SGCD) expressed in Mouse heart, Rat heart, Jurkat using Delta-sarcoglycan (SGCD) Rabbit pAb at 1:1000. Secondary antibody: HRP Goat Anti-Rabbit IgG (H+L) at 1:5000. Lysates/proteins: 30ug per lane. Blocking buffer: 5% non-fat dry milk in TBST. Detection: ECL Enhanced Kit. Exposure time: 120s.

实验步骤

访问官网浏览详情: www.ablybio.cn