

TROVE2 Rabbit pAb

货号: **AYP16524**

产品信息

反应	Human,Mouse,Rat
宿主	Rabbit
克隆性	Polyclonal
预测反应	
应用	WB
推荐浓度	WB: 1:500 - 1:2000
理论分子量	23kDa/58kDa/59kDa/60kDa
实测分子量	61kDa
形式	Liquid
保存条件	Store at -20°C. Avoid freeze / thaw cycles. Buffer: PBS with 0.02% sodium azide,50% glycerol,pH7.3.
偶联物	Unconjugated
阳性对照	MCF7,22Rv1,NCI-H460,SW620,HL-60,Mouse brain,Rat brain,Rat lung
细胞定位	Cytoplasm
纯化	Affinity purification

抗原信息

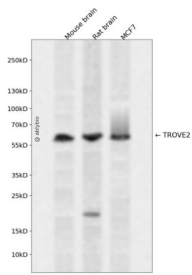
抗原信息	Recombinant fusion protein containing a sequence corresponding to amino acids 1-260 of human TROVE 2 (NP_004591.2).
序列	MEESVNQMQLNEKQIANSQDGYVWQVTDMMNRLHRFLCFGSEGGTYIKEQKLGLENAEALIRLIEDGRGCEVIQEIKSFS QEGRTTKQEPMLFALAICSQCSDISTKQAAFKAIVSEVCRIPHTLFTFIQFKKDLKESMKCGMWGRALRKAIADWYNEKGG MALALAVTKYQRNGWSHKDLLRLSHLKPSSSEGLAIVTKYITKGWKEVHELYKEKALSVETEKLLKYLEAVEKVKRTRDELE VIHLIEEHRLVREHLLT

靶点信息

研究背景	RNA-binding protein that binds to misfolded non-coding RNAs, pre-5S rRNA, and several small cytoplasmic RNA molecules known as Y RNAs. May stabilize some of these RNAs and protect them from degradation. Binds to endogenous Alu retroelements which are induced by type I interferon and stimulate proinflammatory cytokine secretion. Regulates the expression of Alu retroelements as well as inflammatory genes.
------	--

基因ID	6738
基因名	TROVE2
Swiss	P10155
别名	TROVE2;RO60;RORNP;SSA2

产品验证



Western blot analysis of TROVE2 expressed in Mouse brain,Rat brain,MCF7 using TROVE2 Rabbit pAb at 1:1000. Secondary antibody: HRP Goat Anti-Rabbit IgG (H+L) at 1:5000. Lysates/proteins: 30ug per lane. Blocking buffer: 5% non-fat dry milk in TBST. Detection: ECL Enhanced Kit. Exposure time: 120s.

实验步骤

访问官网浏览详情: www.ablybio.cn