

WRB Rabbit pAb

货号: **AYP16520**

产品信息

反应	Mouse,Rat
宿主	Rabbit
克隆性	Polyclonal
预测反应	
应用	WB IHC
推荐浓度	WB: 1:500 - 1:2000 IHC: 1:50 - 1:200
理论分子量	16kDa/19kDa
实测分子量	25kDa
形式	Liquid
保存条件	Store at -20°C. Avoid freeze / thaw cycles. Buffer: PBS with 0.02% sodium azide,50% glycerol,pH7.3.
偶联物	Unconjugated
阳性对照	Mouse testis,Mouse skin,Rat lung,Rat brain
细胞定位	Endoplasmic reticulum membrane,Multi-pass membrane protein
纯化	Affinity purification

抗原信息

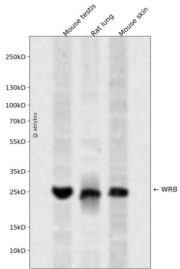
抗原信息	Recombinant fusion protein containing a sequence corresponding to amino acids 30-100 of human WRB (NP_004618.2).
序列	SFSSFMSRVLQKDAEQESQMRAEIQDMKQELSTVNMDEFARYARLERKINKMTDKLKHVKARTAQLAKI

靶点信息

研究背景	This gene encodes a basic nuclear protein of unknown function. The gene is widely expressed in adult and fetal tissues. Since the region proposed to contain the gene(s) for congenital heart disease (CHD) in Down syndrome (DS) patients has been restricted to 21q22.2-22.3, this gene, which maps to 21q22.3, has a potential role in the pathogenesis of Down syndrome congenital heart disease. Alternatively spliced transcript variants encoding different isoforms have been found for this gene.
基因ID	7485

基因名	WRB
Swiss	O00258
别名	WRB;CHD5;GET1

产品验证



Western blot analysis of WRB expressed in Mouse testis,Rat lung,Mouse skin using WRB Rabbit pAb at 1:1000. Secondary antibody: HRP Goat Anti-Rabbit IgG (H+L) at 1:5000. Lysates/proteins: 30ug per lane. Blocking buffer: 5% non-fat dry milk in TBST. Detection: ECL Enhanced Kit. Exposure time: 120s.

实验步骤

访问官网浏览详情: www.ablybio.cn