

EPM2A Rabbit pAb

货号: **AYP16515**

产品信息

反应	Human,Mouse,Rat
宿主	Rabbit
克隆性	Polyclonal
预测反应	
应用	WB
推荐浓度	WB: 1:500 - 1:2000
理论分子量	9kDa/15kDa/20kDa/22kDa/24kDa/35kDa/37kDa
实测分子量	37kDa
形式	Liquid
保存条件	Store at -20°C. Avoid freeze / thaw cycles. Buffer: PBS with 0.02% sodium azide,50% glycerol,pH7.3.
偶联物	Unconjugated
阳性对照	HeLa,Mouse brain,Mouse heart,Mouse testis,Rat brain
细胞定位	Cytoplasm
纯化	Affinity purification

抗原信息

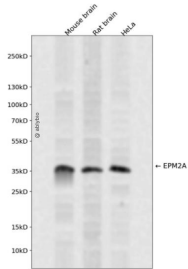
抗原信息	Recombinant fusion protein containing a sequence corresponding to amino acids 244-331 of human EPM2A (NP_005661.1).
序列	MLPQAVCLLHALLEKGHIVYVHCNAGVGRSTAAVCGWLQYVMGWNLRKVQYFLMAKRPAVYIDEEALARAQEDFFQKFGKVRSSVCSL

靶点信息

研究背景	This gene encodes a dual-specificity phosphatase that associates with polyribosomes. The encoded protein may be involved in the regulation of glycogen metabolism. Mutations in this gene have been associated with myoclonic epilepsy of Lafora. Alternative splicing results in multiple transcript variants.
基因ID	7957

基因名	EPM2A
Swiss	O95278
别名	EPM2A;EPM2;MELF;laforin

产品验证



Western blot analysis of EPM2A expressed in Mouse brain,Rat brain,HeLa using EPM2A Rabbit pAb at 1:1000. Secondary antibody: HRP Goat Anti-Rabbit IgG (H+L) at 1:5000. Lysates/proteins: 30ug per lane. Blocking buffer: 5% non-fat dry milk in TBST. Detection: ECL Enhanced Kit. Exposure time: 120s.

实验步骤

访问官网浏览详情: www.ablybio.cn