

NMU Rabbit pAb

货号: **AYP16488**

产品信息

反应	Human,Mouse,Rat
宿主	Rabbit
克隆性	Polyclonal
预测反应	
应用	WB
推荐浓度	WB: 1:500 - 1:1000
理论分子量	19kDa
实测分子量	20KDa
形式	Liquid
保存条件	Store at -20°C. Avoid freeze / thaw cycles. Buffer: PBS with 0.05% proclin300,50% glycerol,pH7.3.
偶联物	Unconjugated
阳性对照	Mouse large intestine,Mouse stomach,Rat large intestine,Rat stomach
细胞定位	Secreted
纯化	Affinity purification

抗原信息

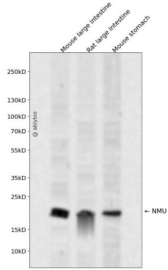
抗原信息	A synthetic peptide corresponding to a sequence within amino acids 75-174 of human NMU (NP_006672.1).
序列	SNALEELCFMIMGMLPKPQEQDEKDNTKRFLFHYSKTQKLGKSNVSSVHPLLQLVPHLHERRMKRFRVDEEFQSPFASQSRGYFLFRPRNGRRSAGFI

靶点信息

研究背景	This gene encodes a member of the neuromedin family of neuropeptides. The encoded protein is a precursor that is proteolytically processed to generate a biologically active neuropeptide that plays a role in pain, stress, immune-mediated inflammatory diseases and feeding regulation. Increased expression of this gene was observed in renal, pancreatic and lung cancers. Alternative splicing results in multiple transcript variants encoding different isoforms. Some of these isoforms may undergo similar processing to generate the mature peptide.
------	--

基因ID	10874
基因名	NMU
Swiss	P48645
别名	NMU

产品验证



Western blot analysis of NMU expressed in Mouse large intestine, Rat large intestine, Mouse stomach using NMU Rabbit pAb at 1:1000. Secondary antibody: HRP Goat Anti-Rabbit IgG (H+L) at 1:5000. Lysates/proteins: 30ug per lane. Blocking buffer: 5% non-fat dry milk in TBST. Detection: ECL Enhanced Kit. Exposure time: 120s.

实验步骤

访问官网浏览详情: www.ablybio.cn