

LILRB4 Rabbit pAb

货号: **AYP16487**

产品信息

反应	Human,Mouse,Rat
宿主	Rabbit
克隆性	Polyclonal
预测反应	
应用	WB IHC IF/ICC
推荐浓度	WB: 1:500 - 1:1000 IHC: 1:50 - 1:200 IF/ICC: 1:50 - 1:200
理论分子量	49kDa
实测分子量	49KDa
形式	Liquid
保存条件	Store at -20°C. Avoid freeze / thaw cycles. Buffer: PBS with 0.05% proclin300,50% glycerol,pH7.3.
偶联物	Unconjugated
阳性对照	A-549,MCF7,THP-1,RAW264.7,Mouse lung,Mouse spleen,Rat lung
细胞定位	Cell membrane,Single-pass type I membrane protein
纯化	Affinity purification

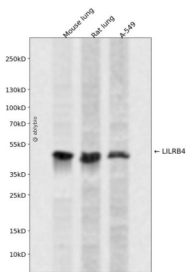
抗原信息

抗原信息	Recombinant fusion protein containing a sequence corresponding to amino acids 22-259 of human LILRB4 (NP_001265355.2).
序列	QAGPLPKPTLWAEPGSVISWGNSTIWCQGTLEAREYRLDKEESPAPWDRQNPLEPKNKARFSIPSMTEDYAGRYRCYYR SPVGWSQPSDPLELVMGTGAYSKPTLSALPSPLVTSGKSVTLQCQRSPMDTFLLIKERAAHPLLHLRSEHGAQQHQAEFP MSPVTSVHGGTYRCFSSHGFSHYLLSHPSDPLELIVSGSLEGPRPSPTRSVSTAAGPEDQPLMPTGSPHSGLRRHWE

靶点信息

研究背景	This gene is a member of the leukocyte immunoglobulin-like receptor (LIR) family, which is found in a gene cluster at chromosomal region 19q13.4. The encoded protein belongs to the subfamily B class of LIR receptors which contain two or four extracellular immunoglobulin domains, a transmembrane domain, and two to four cytoplasmic immunoreceptor tyrosine-based inhibitory motifs (ITIMs). The receptor is expressed on immune cells where it binds to MHC class I molecules on antigen-presenting cells and transduces a negative signal that inhibits stimulation of an immune response. The receptor can also function in antigen capture and presentation. It is thought to control inflammatory responses and cytotoxicity to help focus the immune response and limit autoreactivity. Multiple transcript variants encoding different isoforms have been found for this gene.
基因ID	11006
基因名	LILRB4
Swiss	Q8NHJ6
别名	LILRB4;CD85K;ILT-3;ILT3;LIR-5;LIR5

产品验证



Western blot analysis of LILRB4 expressed in Mouse lung,Rat lung,A-549 using LILRB4 Rabbit pAb at 1:1000. Secondary antibody: HRP Goat Anti-Rabbit IgG (H+L) at 1:5000. Lysates/proteins: 30ug per lane. Blocking buffer: 5% non-fat dry milk in TBST. Detection: ECL Enhanced Kit. Exposure time: 120s.

实验步骤

访问官网浏览详情: www.ablybio.cn