

# ISCU Rabbit pAb

货号: **AYP16483**

## 产品信息

反应	Human
宿主	Rabbit
克隆性	Polyclonal
预测反应	
应用	WB
推荐浓度	<b>WB:</b> 1:500 - 1:2000
理论分子量	15kDa/17kDa
实测分子量	14-18kDa
形式	Liquid
保存条件	Store at -20°C. Avoid freeze / thaw cycles. Buffer: PBS with 0.02% sodium azide,50% glycerol,pH7.3.
偶联物	Unconjugated
阳性对照	HT-1080,U-87MG,293T,A-549,HeLa
细胞定位	Cytoplasm,Mitochondrion,Nucleus
纯化	Affinity purification

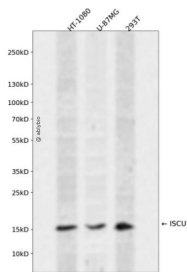
## 抗原信息

抗原信息	Recombinant fusion protein containing a sequence corresponding to amino acids 1-167 of human ISCU (N P_998760.1).
序列	MAAAGAFRLRRAASALLRSPRLPARELSAPARLYHKKVVDHYENPRNVGSLDKTSKNVGTGLVGAPACGDVMKLQIQVD EKGKIVDARFKTFGCGSAIASSSLATEWVKGKTVEEALTIKNTDIAKELCLPPVKLHCSMLAEDAIIKAALADYKQEPKKGE AEKK

## 靶点信息

研究背景	This gene encodes a component of the iron-sulfur (Fe-S) cluster scaffold. Fe-S clusters are cofactors that play a role in the function of a diverse set of enzymes, including those that regulate metabolism, iron homeostasis, and oxidative stress response. Alternative splicing results in transcript variants encoding different protein isoforms that localize either to the cytosol or to the mitochondrion. Mutations in this gene have been found in patients with hereditary myopathy with lactic acidosis. A disease-associated mutation in an intron may activate a cryptic splice site, resulting in the production of a splice variant encoding a putatively non-functional protein. A pseudogene of this gene is present on chromosome 1.
基因ID	23479
基因名	ISCU
Swiss	Q9H1K1
别名	ISCU;2310020H20Rik;HML;ISU2;NIFU;NIFUN;hnifU

## 产品验证



Western blot analysis of ISCU expressed in HT-1080,U-87MG,293T using ISCU Rabbit pAb at 1:1000. Secondary antibody: HRP Goat Anti-Rabbit IgG (H+L) at 1:5000. Lysates/proteins: 30ug per lane. Blocking buffer: 5% non-fat dry milk in TBST. Detection: ECL Enhanced Kit. Exposure time: 120s.

## 实验步骤

访问官网浏览详情: [www.ablybio.cn](http://www.ablybio.cn)