

LMOD1 Rabbit pAb

货号: **AYP16481**

产品信息

反应	Human
宿主	Rabbit
克隆性	Polyclonal
预测反应	
应用	WB IHC
推荐浓度	WB: 1:500 - 1:2000 IHC: 1:50 - 1:200
理论分子量	63kDa/67kDa
实测分子量	63kDa/67kDa
形式	Liquid
保存条件	Store at -20°C. Avoid freeze / thaw cycles. Buffer: PBS with 0.02% sodium azide,50% glycerol,pH7.3.
偶联物	Unconjugated
阳性对照	
细胞定位	Cytoplasm,cytoskeleton
纯化	Affinity purification

抗原信息

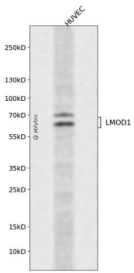
抗原信息	Recombinant fusion protein containing a sequence corresponding to amino acids 29-187 of human LMOD 1 (NP_036266.2).
序列	MEELEKELDVVDPDGSVPVGLRQRNQTEKQSTGVYNREAMLNFCEKETKKLMQREMSMDESKQVETKTDANKGEERGR DASKKALGPRRDSDLGKEPKRGGLKKSFSRDRDEAGGKSGEKPKEEKIIRGIDKGRVRAAVDKKEAGKDGRGEERAVAT KK

靶点信息

研究背景	The leiomodoin 1 protein has a putative membrane-spanning region and 2 types of tandemly repeated blocks. The transcript is expressed in all tissues tested, with the highest levels in thyroid, eye muscle, skeletal muscle, and ovary. Increased expression of leiomodoin 1 may be linked to Graves' disease and thyroid-associated ophthalmopathy.
------	---

基因ID	25802
基因名	LMOD1
Swiss	P29536
别名	LMOD1;1D;64kD;D1;SM-LMOD;SMLMOD

产品验证



Western blot analysis of LMOD1 expressed in HUVEC using LMOD1 Rabbit pAb at 1:1000. Secondary antibody: HRP Goat Anti-Rabbit IgG (H+L) at 1:5000. Lysates/proteins: 30ug per lane. Blocking buffer: 5% non-fat dry milk in TBST. Detection: ECL Enhanced Kit. Exposure time: 120s.

实验步骤

访问官网浏览详情: www.ablybio.cn