

GCA Rabbit pAb

货号: **AYP16480**

产品信息

反应	Human,Mouse
宿主	Rabbit
克隆性	Polyclonal
预测反应	
应用	WB IF/ICC
推荐浓度	WB: 1:500 - 1:2000 IF/ICC: 1:50 - 1:100
理论分子量	24kDa
实测分子量	24kDa
形式	Liquid
保存条件	Store at -20°C. Avoid freeze / thaw cycles. Buffer: PBS with 0.02% sodium azide,50% glycerol,pH7.3.
偶联物	Unconjugated
阳性对照	HL-60,HT-29,Mouse kidney,Mouse heart
细胞定位	Cytoplasm,Cytoplasmic granule membrane,Cytoplasmic side,Peripheral membrane protein
纯化	Affinity purification

抗原信息

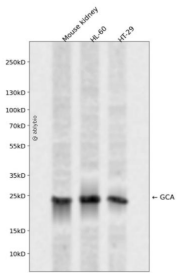
抗原信息	Recombinant fusion protein containing a sequence corresponding to amino acids 1-217 of human GCA (N P_036330.1).
序列	MAYPGYGGGFGNFSIQVPGMQMGQPVPETGPAILLDGYSGPAYSDTYSSAGDSVYTYFSAVAGQDGEVDAEELQRCLT QSGINGTYSPFSLETGRIMIAMLDRDHTGKMGFNAFKELWAALNAWKENFMTVDQDGSQVEHHELRLQAIGLMGYRLSP QTLTTIVKRYSKNGRIFDDYVACCVKLRALTDFFRKRDLQQGSANFIYDDFLQGTMAI

靶点信息

研究背景	This gene product, grancalcin, is a calcium-binding protein abundant in neutrophils and macrophages. It belongs to the penta-EF-hand subfamily of proteins which includes sorcin, calpain, and ALG-2. Grancalcin localization is dependent upon calcium and magnesium. In the absence of divalent cation, grancalcin localizes to the cytosolic fraction; with magnesium alone, it partitions with the granule fraction; and in the presence of magnesium and calcium, it associates with both the granule and membrane fractions, suggesting a role for grancalcin in granule-membrane fusion and degranulation.
------	---

基因ID	25801
基因名	GCA
Swiss	P28676
别名	GCA;GCL

产品验证



Western blot analysis of GCA expressed in Mouse kidney,HL-60,HT-29 using GCA Rabbit pAb at 1:1000. Secondary antibody: HRP Goat Anti-Rabbit IgG (H+L) at 1:5000. Lysates/proteins: 30ug per lane. Blocking buffer: 5% non-fat dry milk in TBST. Detection: ECL Enhanced Kit. Exposure time: 120s.

实验步骤

访问官网浏览详情: www.ablybio.cn