

TES Rabbit pAb

货号: **AYP16477**

产品信息

反应	Human,Rat
宿主	Rabbit
克隆性	Polyclonal
预测反应	
应用	WB IHC
推荐浓度	WB: 1:500 - 1:2000 IHC: 1:50 - 1:200
理论分子量	46kDa/47kDa
实测分子量	47kDa
形式	Liquid
保存条件	Store at -20°C. Avoid freeze / thaw cycles. Buffer: PBS with 0.01% thiomersal,50% glycerol,pH7.3.
偶联物	Unconjugated
阳性对照	HeLa,22Rv1,Rat ovary
细胞定位	Cell junction,Cytoplasm,focal adhesion
纯化	Affinity purification

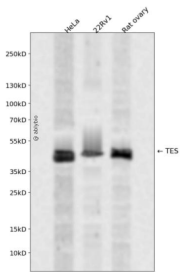
抗原信息

抗原信息	Recombinant fusion protein containing a sequence corresponding to amino acids 1-260 of human TES (NP_056456.1).
序列	MDLENKVKKMGLGHEQGFAPCLKCKEKGCEGFELHFWRKICRNCKGQEEHDVLLSNEEDRVKVKLFEDTKYTTLIAKLS SDGIPMYKRNVMLTNPVAAKKNVSINTVTYEWAPPVQNQALARQYMQMLPKEKQPVAGSEGAQYRKKQLAKQLPAHDQ DPSKCHELSPREVKEMEQQFVKYKSEALGVGDVKLPCEMDAQQPKQMNIPIGGDRSTPAAVGAMEDKSAEHKRTQYSCY CCKLSMKEGDPPIYAERAGYDKL

靶点信息

研究背景	Cancer-associated chromosomal changes often involve regions containing fragile sites. This gene maps to a common fragile site on chromosome 7q31.2 designated FRA7G. This gene is similar to mouse Testin, a testosterone-responsive gene encoding a Sertoli cell secretory protein containing three LIM domains. LIM domains are double zinc-finger motifs that mediate protein-protein interactions between transcription factors, cytoskeletal proteins and signaling proteins. This protein is a negative regulator of cell growth and may act as a tumor suppressor. This scaffold protein may also play a role in cell adhesion, cell spreading and in the reorganization of the actin cytoskeleton. Multiple protein isoforms are encoded by transcript variants of this gene.
基因ID	26136
基因名	TES
Swiss	Q9UGI8
别名	TES;TESS;TESS-2;testin

产品验证



Western blot analysis of TES expressed in HeLa,22Rv1,Rat ovary using TES Rabbit pAb at 1:1000. Secondary antibody: HRP Goat Anti-Rabbit IgG (H+L) at 1:5000. Lysates/proteins: 30ug per lane. Blocking buffer: 5% non-fat dry milk in TBST. Detection: ECL Enhanced Kit. Exposure time: 120s.

实验步骤

访问官网浏览详情: www.ablybio.cn