

LDLRAP1 Rabbit pAb

货号: **AYP16476**

产品信息

| | |
|-------|--|
| 反应 | Human,Mouse,Rat |
| 宿主 | Rabbit |
| 克隆性 | Polyclonal |
| 预测反应 | |
| 应用 | WB IF/ICC |
| 推荐浓度 | WB: 1:500 - 1:1000 IF/ICC: 1:50 - 1:100 |
| 理论分子量 | 33kDa |
| 实测分子量 | 36KDa |
| 形式 | Liquid |
| 保存条件 | Store at -20°C. Avoid freeze / thaw cycles. Buffer: PBS with 0.05% proclin300,50% glycerol,pH7.3. |
| 偶联物 | Unconjugated |
| 阳性对照 | HeLa,293T,Mouse liver |
| 细胞定位 | Cytoplasm |
| 纯化 | Affinity purification |

抗原信息

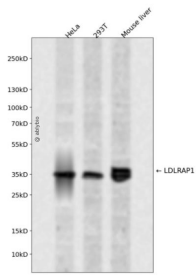
| | |
|------|--|
| 抗原信息 | Recombinant fusion protein containing a sequence corresponding to amino acids 59-308 of human LDLRAP1 (NP_056442.2). |
| 序列 | EQPKGEELSAAAIAKRIVATAKASGKKLQKVTLKVS PRGIILTDNLNQLIENVSIYRISYCTADKMHDKVFAYIAQSQHNQSLE CHAFLCTKRKMAQAVTLTVAQAFKVAFEFWQVSKEEKEKRDKASQEGGDVLGARQDCTPSLKSLVATGNLLDLEETAKA PLSTVSANTTNMDEVPRPQALSGSSVWELDDGLDEAFSRLAQSRTNPQVLDTGLTAQDMHYAQCLSPVDWDKPDSS GTEQDDLFSF |

靶点信息

| | |
|------|--|
| 研究背景 | The protein encoded by this gene is a cytosolic protein which contains a phosphotyrosine binding (PTD) domain. The PTD domain has been found to interact with the cytoplasmic tail of the LDL receptor. Mutations in this gene lead to LDL receptor malfunction and cause the disorder autosomal recessive hypercholesterolemia. |
|------|--|

| | |
|-------|-----------------------------------|
| 基因ID | 26119 |
| 基因名 | LDLRAP1 |
| Swiss | Q5SW96 |
| 别名 | LDLRAP1;ARH;ARH1;ARH2;FHCB1;FHCB2 |

产品验证



Western blot analysis of LDLRAP1 expressed in HeLa,293T,Mouse liver using LDLRAP1 Rabbit pAb at 1:1000. Secondary antibody: HRP Goat Anti-Rabbit IgG (H+L) at 1:5000. Lysates/proteins: 30ug per lane . Blocking buffer: 5% non-fat dry milk in TBST. Detection: ECL Enhanced Kit. Exposure time: 120s.

实验步骤

访问官网浏览详情: www.ablybio.cn