

C16orf80 Rabbit pAb

货号: **AYP16475**

产品信息

反应	Human,Mouse,Rat
宿主	Rabbit
克隆性	Polyclonal
预测反应	
应用	WB IF/ICC
推荐浓度	WB: 1:500 - 1:1000 IF/ICC: 1:50 - 1:100
理论分子量	22kDa
实测分子量	23KDa
形式	Liquid
保存条件	Store at -20°C. Avoid freeze / thaw cycles. Buffer: PBS with 0.05% proclin300,50% glycerol,pH7.3.
偶联物	Unconjugated
阳性对照	SKOV3,Mouse testis,Rat lung
细胞定位	Cell projection,Cytoplasm,Nucleus,centriole,centrosome,cilium,cilium basal body,cytoskeleton,microtubule organizing center
纯化	Affinity purification

抗原信息

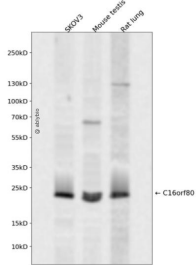
抗原信息	A synthetic peptide corresponding to a sequence within amino acids 94-193 of human C16orf80 (NP_037374.1).
序列	LDDKNVRRRRFRASNYQSTTRVKPFICTMPMRLDDGWNQIQFNLLDFTRRAYGTNYIETLRVQIHANCRIRRVYFSDRLYSEDELPAEFKLYLPVQNKAKQ

靶点信息

研究背景	Cilium- and flagellum-specific protein that plays a role in axonemal structure organization and motility. Involved in the regulation of the size and morphology of cilia. Required for axonemal microtubules polyglutamylation.
基因ID	29105

基因名	CFAP20
Swiss	Q9Y6A4
别名	CFAP20;C16orf80;EVORF;GTL3;fSAP23

产品验证



Western blot analysis of C16orf80 expressed in SKOV3, Mouse testis, Rat lung using C16orf80 Rabbit pAb at 1:1000. Secondary antibody: HRP Goat Anti-Rabbit IgG (H+L) at 1:5000. Lysates/proteins: 30ug per lane. Blocking buffer: 5% non-fat dry milk in TBST. Detection: ECL Enhanced Kit. Exposure time: 120 S.

实验步骤

访问官网浏览详情: www.ablybio.cn