

ACTL6B Rabbit pAb

货号: **AYP16471**

产品信息

反应	Human,Mouse,Rat
宿主	Rabbit
克隆性	Polyclonal
预测反应	
应用	WB IHC IF/ICC
推荐浓度	WB: 1:500 - 1:2000 IHC: 1:50 - 1:200 IF/ICC: 1:50 - 1:100
理论分子量	46kDa
实测分子量	47-55kDa
形式	Liquid
保存条件	Store at -20°C. Avoid freeze / thaw cycles. Buffer: PBS with 0.02% sodium azide,50% glycerol,pH7.3.
偶联物	Unconjugated
阳性对照	HL-60,22Rv1,BT-474,HeLa,HepG2,Mouse brain,Mouse skeletal muscle
细胞定位	Nucleus
纯化	Affinity purification

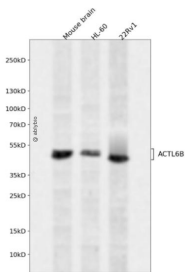
抗原信息

抗原信息	Recombinant fusion protein containing a sequence corresponding to amino acids 1-280 of human ACTL6B (NP_057272.1).
序列	MSGGVYGGDEVGALVFDIGSFSVRAGYAGEDCPKADFPTTVGLLAAEEGGGLEEGDKEKKGKIFHIDTNALHVPRDGA EVMSPKNGMIEDWECFRALDHTYSKHKSEPNLHPVLMSEAPWNTRAKREKLTLMFEQYNIPAFFLCKTAVLTAFANG RSTGLVLDGATHHTTAIPVHDGYVLQGGIVKSPLAGDFISMQCRELFQEMAIDIIPPYMIAAKEPVREGAPPNWKKEKLPQ VSKSWHNYMCNEVIQDFQASVLQVSDSPYDEQVAAQMP

靶点信息

研究背景	The protein encoded by this gene is a member of a family of actin-related proteins (ARPs) which share significant amino acid sequence identity to conventional actins. Both actins and ARPs have an actin fold, which is an ATP-binding cleft, as a common feature. The ARPs are involved in diverse cellular processes, including vesicular transport, spindle orientation, nuclear migration and chromatin remodeling. This gene encodes a subunit of the BAF (BRG1/brm-associated factor) complex in mammals, which is functionally related to SWI/SNF complex in <i>S. cerevisiae</i> and <i>Drosophila</i> ; the latter is thought to facilitate transcriptional activation of specific genes by antagonizing chromatin-mediated transcriptional repression. This subunit may be involved in the regulation of genes by structural modulation of their chromatin, specifically in the brain. Alternative splicing results in multiple transcript variants.
基因ID	51412
基因名	ACTL6B
Swiss	O94805
别名	ACTL6B;ACTL6;BAF53B;arpNalpha

产品验证



Western blot analysis of ACTL6B expressed in Mouse brain,HL-60,22Rv1 using ACTL6B Rabbit pAb at 1:1000. Secondary antibody: HRP Goat Anti-Rabbit IgG (H+L) at 1:5000. Lysates/proteins: 30ug per lane. Blocking buffer: 5% non-fat dry milk in TBST. Detection: ECL Enhanced Kit. Exposure time: 120s.

实验步骤

访问官网浏览详情: www.ablybio.cn