

METTL13 Rabbit pAb

货号: **AYP16469**

产品信息

反应	Human,Mouse,Rat
宿主	Rabbit
克隆性	Polyclonal
预测反应	
应用	WB
推荐浓度	WB: 1:500 - 1:2000
理论分子量	44kDa/61kDa/68kDa/72kDa/78kDa
实测分子量	90kDa
形式	Liquid
保存条件	Store at -20°C. Avoid freeze / thaw cycles. Buffer: PBS with 0.02% sodium azide,50% glycerol,pH7.3.
偶联物	Unconjugated
阳性对照	HeLa,HepG2,MCF7,K-562,Mouse heart,Mouse kidney
细胞定位	cytoplasm,mitochondrion,nucleus
纯化	Affinity purification

抗原信息

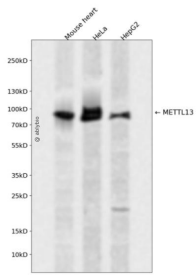
抗原信息	Recombinant fusion protein containing a sequence corresponding to amino acids 540-699 of human METTL13 (NP_057019.3).
序列	SQSDRMKVHIADGLDYIASLAGGGEARPCYDVIMFDVDSKDPTLGMSCPPAFVEQSFLQVKVKSILTPEGVFILNLVCRDLGLKDSVLAGLKAVFPLLYVRRIEGEVNEILFCQLHPEQKLATPELLETAQALERTLRKPGRGWDDTYVLSMMLKTVKIV

靶点信息

研究背景	Dual methyltransferase that catalyzes methylation of elongation factor 1-alpha (EEF1A1 and EEF1A2 at two different positions, and is therefore involved in the regulation of mRNA translation. Via its C-terminus, methylates EEF1A1 and EEF1A2 at the N-terminal residue 'Gly-2'. Via its N-terminus dimethylates EEF1A1 and EEF1A2 at residue 'Lys-55'. Has no activity towards core histones H2A, H2B, H3 and H4. Negatively regulates cell proliferation at G1/S transition via transcriptional suppression of cell cycle regulatory genes such as CDK4 and CDK6.
------	---

基因ID	51603
基因名	METTL13
Swiss	Q8N6R0
别名	METTL13;5630401D24Rik;CGI-01;KIAA0859;feat

产品验证



Western blot analysis of METTL13 expressed in Mouse heart, HeLa, HepG2 using METTL13 Rabbit pAb at 1:1000. Secondary antibody: HRP Goat Anti-Rabbit IgG (H+L) at 1:5000. Lysates/proteins: 30ug per lane. Blocking buffer: 5% non-fat dry milk in TBST. Detection: ECL Enhanced Kit. Exposure time: 120s.

实验步骤

访问官网浏览详情: www.ablybio.cn