

METTL20 Rabbit pAb

货号: **AYP16453**

产品信息

反应	Mouse,Rat
宿主	Rabbit
克隆性	Polyclonal
预测反应	
应用	WB
推荐浓度	WB: 1:500 - 1:2000
理论分子量	29kDa
实测分子量	33kDa
形式	Liquid
保存条件	Store at -20°C. Avoid freeze / thaw cycles. Buffer: PBS with 0.02% sodium azide,50% glycerol,pH7.3.
偶联物	Unconjugated
阳性对照	Mouse heart
细胞定位	Cytoplasm,Mitochondrion matrix
纯化	Affinity purification

抗原信息

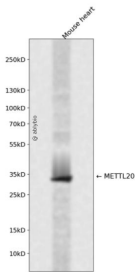
抗原信息	Recombinant fusion protein containing a sequence corresponding to amino acids 105-262 of human METTL20 (NP_001129335.1).
序列	RYLLDNPDVVRGKSVLDLGS GCGATAIAAKMSGASRILANDIDPIAGMAITLNCELNRLNPFILIQNILNLEQDKWDLVVLGDMFYDEDLADSLHQWLKCFWYRTRVLIGDPGRPQFSGHSIQHHLHKVVEYSLLESTRQENSGLTTSTVWGFQP

靶点信息

研究背景	Protein-lysine methyltransferase that selectively trimethylates the flavoprotein ETFB in mitochondria. The reby, may negatively regulate the function of ETFB in electron transfer from Acyl-CoA dehydrogenases to the main respiratory chain.
基因ID	254013

基因名	ETFBKMT
Swiss	Q8IXQ9
别名	ETFBKMT;C12orf72;ETFB-KMT;METTL20

产品验证



Western blot analysis of METTL20 expressed in Mouse heart using METTL20 Rabbit pAb at 1:1000. Secondary antibody: HRP Goat Anti-Rabbit IgG (H+L) at 1:5000. Lysates/proteins: 30ug per lane. Blocking buffer: 5% non-fat dry milk in TBST. Detection: ECL Enhanced Kit. Exposure time: 120s.

实验步骤

访问官网浏览详情: www.ablybio.cn