

PTCRA Rabbit pAb

货号: **AYP16452**

产品信息

反应	Human
宿主	Rabbit
克隆性	Polyclonal
预测反应	
应用	WB
推荐浓度	WB: 1:500 - 1:2000
理论分子量	18kDa/26kDa/29kDa
实测分子量	37kDa
形式	Liquid
保存条件	Store at -20°C. Avoid freeze / thaw cycles. Buffer: PBS with 0.02% sodium azide,50% glycerol,pH7.3.
偶联物	Unconjugated
阳性对照	K-562,Jurkat,HL-60, B cells,THP-1,Raji
细胞定位	Membrane,Single-pass type I membrane protein
纯化	Affinity purification

抗原信息

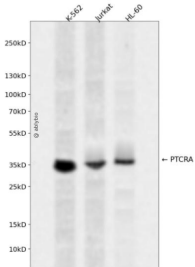
抗原信息	Recombinant fusion protein containing a sequence corresponding to amino acids 172-281 of human PTCRA (NP_612153.2).
序列	LCDPAGPLPSPATTTLRALGSHRLHPATETGGREATSSRPQPRDRRWGDTPPGRKPGSPVWEGESYLSSYPTCPAQA WCSRSALRAPSSSLGAFFAGDLPPPLQAGAA

靶点信息

研究背景	The protein encoded by this gene is a single-pass type I membrane protein that is found in immature but not mature T-cells. Along with TCRB and CD3 complex, the encoded protein forms the pre-T-cell receptor complex, which regulates early T-cell development. Four transcript variants encoding different isoforms have been found for this gene.
基因ID	171558

基因名	PTCRA
Swiss	Q6ISU1
别名	PTCRA;PT-ALPHA;PTA

产品验证



Western blot analysis of PTCRA expressed in K-562, Jurkat, HL-60 using PTCRA Rabbit pAb at 1:1000. Secondary antibody: HRP Goat Anti-Rabbit IgG (H+L) at 1:5000. Lysates/proteins: 30ug per lane. Blocking buffer: 5% non-fat dry milk in TBST. Detection: ECL Enhanced Kit. Exposure time: 120s.

实验步骤

访问官网浏览详情: www.ablybio.cn