

PLA2G2D Rabbit pAb

货号: **AYP16448**

产品信息

反应	Human,Rat
宿主	Rabbit
克隆性	Polyclonal
预测反应	
应用	WB IHC IF/ICC
推荐浓度	WB: 1:500 - 1:2000 IHC: 1:50 - 1:200 IF/ICC: 1:10 - 1:100
理论分子量	16kDa
实测分子量	22KDa
形式	Liquid
保存条件	Store at -20°C. Avoid freeze / thaw cycles. Buffer: PBS with 0.02% sodium azide,50% glycerol,pH7.3.
偶联物	Unconjugated
阳性对照	Daudi,RPMI 8226
细胞定位	Secreted
纯化	Affinity purification

抗原信息

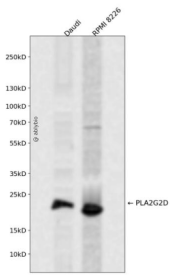
抗原信息	Recombinant fusion protein containing a sequence corresponding to amino acids 21-145 of human PLA2G2D (NP_036532.1).
序列	GILNLNKMVKQVTGKMPILSYWYPYGCHCGLGGRGQPKDATDWCCQTHDCCYDHLKTQGCSIYKDYRYNFSQGNIHCS DKGSWCEQQLCACDKEVAFCLKRNLDTYQKRLRFYWRPHCRGQTPGC

靶点信息

研究背景	This gene encodes a secreted member of the phospholipase A2 family, and is found in a cluster of related family members on chromosome 1. Phospholipase A2 family members hydrolyze the sn-2 fatty acid ester bond of glycerophospholipids to produce lysophospholipids and free fatty acid. This gene may be involved in inflammation and immune response, and in weight loss associated with chronic obstructive pulmonary disease. Alternative splicing results in multiple transcript variants encoding different isoforms.
------	--------------------------------------------------------------------------------------------------------------------------------------------------------------------------------------------------------------------------------------------------------------------------------------------------------------------------------------------------------------------------------------------------------------------------------------------------------------------------------------------------------------------------------

基因ID	26279
基因名	PLA2G2D
Swiss	Q9UNK4
别名	PLA2G2D;PLA2IID;SPLASH;sPLA2-IID;sPLA2S

产品验证



Western blot analysis of PLA2G2D expressed in Daudi,RPMI 8226 using PLA2G2D Rabbit pAb at 1:1000. Secondary antibody: HRP Goat Anti-Rabbit IgG (H+L) at 1:5000. Lysates/proteins: 30ug per lane. Blocking buffer: 5% non-fat dry milk in TBST. Detection: ECL Enhanced Kit. Exposure time: 120s.

实验步骤

访问官网浏览详情: www.ablybio.cn