

ELF5 Rabbit pAb

货号: **AYP16443**

产品信息

反应	Human,Mouse,Rat
宿主	Rabbit
克隆性	Polyclonal
预测反应	
应用	WB IHC IF/ICC
推荐浓度	WB: 1:500 - 1:1000 IHC: 1:50 - 1:200 IF/ICC: 1:50 - 1:100
理论分子量	16kDa/18kDa/30kDa/31kDa
实测分子量	31KDa
形式	Liquid
保存条件	Store at -20°C. Avoid freeze / thaw cycles. Buffer: PBS with 0.01% thiomersal,50% glycerol,pH7.3.
偶联物	Unconjugated
阳性对照	Rat lung,Rat kidney
细胞定位	Nucleus
纯化	Affinity purification

抗原信息

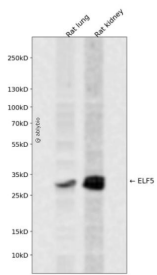
抗原信息	Recombinant fusion protein containing a sequence corresponding to amino acids 40-150 of human ELF5 (NP_938195.1).
序列	EEYYPAFEHQACDSYWTSVHPEYWTKRHVWEWLQFCCDQYKLDTNCISFCNFNISGLQLCSMTQEEFVEAAGLCGEYL YFILQNIRTQGYSEFFNDAEESKATIKDYADSN

靶点信息

研究背景	The protein encoded by this gene is a member of an epithelium-specific subclass of the Ets transcription factor family. In addition to its role in regulating the later stages of terminal differentiation of keratinocytes, it appears to regulate a number of epithelium-specific genes found in tissues containing glandular epithelium such as salivary gland and prostate. It has very low affinity to DNA due to its negative regulatory domain at the amino terminus. Several alternatively spliced transcript variants encoding different isoforms have been described for this gene.
------	---

基因ID	2001
基因名	ELF5
Swiss	Q9UKW6
别名	ELF5;ESE2

产品验证



Western blot analysis of ELF5 expressed in Rat lung,Rat kidney using ELF5 Rabbit pAb at 1:1000. Secondary antibody: HRP Goat Anti-Rabbit IgG (H+L) at 1:5000. Lysates/proteins: 30ug per lane. Blocking buffer: 5% non-fat dry milk in TBST. Detection: ECL Enhanced Kit. Exposure time: 120s.

实验步骤

访问官网浏览详情: www.ablybio.cn