

# ETV1 Rabbit pAb

货号: **AYP16440**

## 产品信息

反应	Human,Mouse,Rat
宿主	Rabbit
克隆性	Polyclonal
预测反应	
应用	WB
推荐浓度	<b>WB:</b> 1:500 - 1:1000
理论分子量	43kDa/48kDa/50kDa/52kDa/53kDa/55kDa
实测分子量	55KDa
形式	Liquid
保存条件	Store at -20°C. Avoid freeze / thaw cycles. Buffer: PBS with 0.05% proclin300,50% glycerol,pH7.3.
偶联物	Unconjugated
阳性对照	Mouse brain,Rat brain,Rat kidney,Rat lung
细胞定位	Nucleus
纯化	Affinity purification

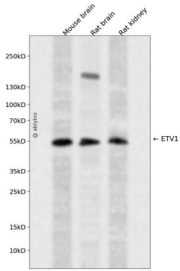
## 抗原信息

抗原信息	Recombinant fusion protein containing a sequence corresponding to amino acids 1-200 of human ETV1 ( NP_004947.2).
序列	MDGFYDQQVPYMTNSQRGRNCNEKPTNVRKRKFINRDLAHDSEELFQDLSQLQETWLAEAQVPDNDQFVDPDYQAE SLAFHGLPLKIKKEPHSPCSEISSACSQEQPFKFSYGEKCLYNVSAYDQKPQVGMRPSNPPTPSSTPV SPLHHASPNSTHTP KPDRAFP AHLPPSQSIPDSSYPMDHRFRRLSEPCNSFPPL

## 靶点信息

研究背景	This gene encodes a member of the ETS (E twenty-six) family of transcription factors. The ETS proteins regulate many target genes that modulate biological processes like cell growth, angiogenesis, migration, proliferation and differentiation. All ETS proteins contain an ETS DNA-binding domain that binds to DNA sequences containing the consensus 5'-CGGA[AT]-3'. The protein encoded by this gene contains a conserved short acidic transactivation domain (TAD) in the N-terminal region, in addition to the ETS DNA-binding domain in the C-terminal region. This gene is involved in chromosomal translocations, which result in multiple fusion proteins including EWS-ETV1 in Ewing sarcoma and at least 10 ETV1 partners (see PMID: 19657377, Table 1) in prostate cancer. In addition to chromosomal rearrangement, this gene is overexpressed in prostate cancer, melanoma and gastrointestinal stromal tumor. Multiple alternatively spliced transcripts encoding different isoforms have been identified.
基因ID	2115
基因名	ETV1
Swiss	P50549
别名	ETV1;ER81

## 产品验证



Western blot analysis of ETV1 expressed in Mouse brain, Rat brain, Rat kidney using ETV1 Rabbit pAb at 1:1000. Secondary antibody: HRP Goat Anti-Rabbit IgG (H+L) at 1:5000. Lysates/proteins: 30ug per lane. Blocking buffer: 5% non-fat dry milk in TBST. Detection: ECL Enhanced Kit. Exposure time: 120s.

## 实验步骤

访问官网浏览详情: [www.ablybio.cn](http://www.ablybio.cn)