

# RSRC1 Rabbit pAb

货号: **AYP16431**

## 产品信息

反应	Human,Mouse,Rat
宿主	Rabbit
克隆性	Polyclonal
预测反应	
应用	WB IHC IF/ICC
推荐浓度	<b>WB:</b> 1:500 - 1:2000 <b>IHC:</b> 1:50 - 1:100 <b>IF/ICC:</b> 1:50 - 1:100
理论分子量	31kDa/38kDa
实测分子量	38kDa
形式	Liquid
保存条件	Store at -20°C. Avoid freeze / thaw cycles. Buffer: PBS with 0.02% sodium azide,50% glycerol,pH7.3.
偶联物	Unconjugated
阳性对照	SW480,Mouse brain
细胞定位	Cytoplasm,Nucleus,Nucleus speckle
纯化	Affinity purification

## 抗原信息

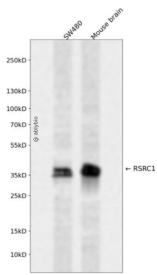
抗原信息	Recombinant fusion protein containing a sequence corresponding to amino acids 117-276 of human RSRC1 (NP_001258763.1).
序列	EHLPPAEQAKARLQLVLEAAAKADEALKAKERNEEEAKRRKEEDQATLVEQVKRVKEIEAIESDSFVQQTFRSSKEVKKSVE PSEVKQATSTSGPASAVADPPSTEKEIDPTSIPTAIKYQDDNSLAHPNLFIEKADAEEKWFKRLIALRQERLMGSPVA

## 靶点信息

研究背景	This gene encodes a member of the serine and arginine rich-related protein family. The encoded protein is involved in both constitutive and alternative mRNA splicing. This gene may be associated with schizophrenia. A pseudogene of this gene is located on chromosome 9. Alternative splicing results in multiple transcript variants encoding different isoforms.
------	--

基因ID	51319
基因名	RSRC1
Swiss	Q96IZ7
别名	RSRC1;BM-011;SFRS21;SRrp53

## 产品验证



Western blot analysis of RSRC1 expressed in SW480, Mouse brain using RSRC1 Rabbit pAb at 1:1000. Secondary antibody: HRP Goat Anti-Rabbit IgG (H+L) at 1:5000. Lysates/proteins: 30ug per lane. Blocking buffer: 5% non-fat dry milk in TBST. Detection: ECL Enhanced Kit. Exposure time: 120s.

## 实验步骤

访问官网浏览详情: [www.ablybio.cn](http://www.ablybio.cn)