

SMCHD1 Rabbit pAb

货号: **AYP16429**

产品信息

反应	Human,Rat
宿主	Rabbit
克隆性	Polyclonal
预测反应	
应用	WB IF/ICC
推荐浓度	WB: 1:500 - 1:2000 IF/ICC: 1:50 - 1:100
理论分子量	85kDa/215kDa/226kDa
实测分子量	246kDa
形式	Liquid
保存条件	Store at -20°C. Avoid freeze / thaw cycles. Buffer: PBS with 0.02% sodium azide,50% glycerol,pH7.3.
偶联物	Unconjugated
阳性对照	HL-60,SKOV3,Jurkat,U-251MG,HepG2,Rat brain
细胞定位	Chromosome
纯化	Affinity purification

抗原信息

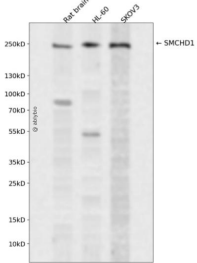
抗原信息	Recombinant fusion protein containing a sequence corresponding to amino acids 1756-2005 of human SMCHD1 (NP_056110.2).
序列	TTDAARRIYDETQGRQQVLPPLDSIYKKTLPDWKRSPLHFRNGKLYFKPIGDPVFARDLLTFPDNVEHCETVFGMLLGDTIIL DNLDAANHRYKEVVKITHCPTLLTRDGDRI SNGKFGGLQNKAPPMDKLRGMVFGAPVPKQCLILGEQIDLLQQYRSAVC KLDVSNKDLNSQLEYLRTPDMRKKKQELDEHEKNLKLIEEKLGMTPIRKCNDSL RHSPKVETTDPCVPPKMRREATRQNR IITKTDV

靶点信息

研究背景	This gene encodes a protein which contains a hinge region domain found in members of the SMC (structural maintenance of chromosomes) protein family.
基因ID	23347

基因名	SMCHD1
Swiss	A6NHR9
别名	SMCHD1;BAMS;FSDH2

产品验证



Western blot analysis of SMCHD1 expressed in Rat brain,HL-60,SKOV3 using SMCHD1 Rabbit pAb at 1:1000. Secondary antibody: HRP Goat Anti-Rabbit IgG (H+L) at 1:5000. Lysates/proteins: 30ug per lane . Blocking buffer: 5% non-fat dry milk in TBST. Detection: ECL Enhanced Kit. Exposure time: 120s.

实验步骤

访问官网浏览详情: www.ablybio.cn