

Pan Lactic acid-Lysine Rabbit pAb

货号: **AYP16415**

产品信息

反应	Human,Mouse,Rat
宿主	Rabbit
克隆性	Polyclonal
预测反应	
应用	WB
推荐浓度	WB: 1:500 - 1:1000
理论分子量	
实测分子量	35-130KDa
形式	Liquid
保存条件	Store at -20°C. Avoid freeze / thaw cycles. Buffer: PBS with 0.01% thiomersal,50% glycerol,pH7.3.
偶联物	Unconjugated
阳性对照	HeLa,NIH/3T3,C6
细胞定位	
纯化	Affinity purification

抗原信息

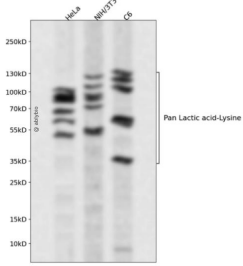
抗原信息	A synthetic peptide corresponding to a sequence containing crotonylated K.
序列	

靶点信息

研究背景	Histone lysine lactation (Kla) is a newly discovered histone modification that regulates gene expression in macrophages. In M1 macrophages, lactic acid is derived from incompletely oxidized glucose and then produces lactyl-CoA, which is transferred via acetyltransferase p300 to the lysine tail of the histone. This modification is abundant in gene promoter regions that lack acetylation and are associated with gene expression activation.
基因ID	
基因名	

Swiss	
别名	

产品验证



Western blot analysis of Pan Lactic acid-Lysine expressed in HeLa,NIH/3T3,C6 using Pan Lactic acid-Lysine Rabbit pAb at 1:1000. Secondary antibody: HRP Goat Anti-Rabbit IgG (H+L) at 1:5000. Lysates/proteins: 30ug per lane. Blocking buffer: 5% non-fat dry milk in TBST. Detection: ECL Enhanced Kit. Exposure time: 120s.

实验步骤

访问官网浏览详情: www.ablybio.cn