

GCM1 Rabbit pAb

货号: **AYP16400**

产品信息

反应	Human
宿主	Rabbit
克隆性	Polyclonal
预测反应	
应用	WB IF/ICC
推荐浓度	WB: 1:500 - 1:2000 IF/ICC: 1:50 - 1:100
理论分子量	49kDa
实测分子量	49kDa
形式	Liquid
保存条件	Store at -20°C. Avoid freeze / thaw cycles. Buffer: PBS with 0.02% sodium azide, 50% glycerol, pH7.3.
偶联物	Unconjugated
阳性对照	HepG2 cells, HeLa cells
细胞定位	Nucleus
纯化	Affinity purification

抗原信息

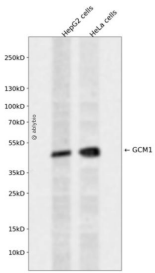
抗原信息	Recombinant fusion protein containing a sequence corresponding to amino acids 207-436 of human GCM 1 (NP_003634.2).
序列	SFQEGVQLPGSYSGHLIANTPQQNSLNDKCFKSYGLGGITDLTDQTSTVDPMKLYEKRLSSSRITYSSGDLPPSASGV YSDHGDLDQAWSKNAALGRNHLADNCYSNYPFPLTSWPCSFSPQNSSEPFYQQLPLEPPAAKTGCPPLWPNPAGNLYEE KVHVDNFNSYVQSPAYHSPQEDPFLFTYASHPHQYSLPSKSSKWDFFEEEMTYLGLDHCNNDMLLNLCPLR

靶点信息

研究背景	This gene encodes a DNA-binding protein with a gcm-motif (glial cell missing motif). The encoded protein is a homolog of the Drosophila glial cells missing gene (gcm). This protein binds to the GCM-motif (A/G)CC CGCAT, a novel sequence among known targets of DNA-binding proteins. The N-terminal DNA-binding domain confers the unique DNA-binding activity of this protein.
------	---

基因ID	8521
基因名	GCM1
Swiss	Q9NP62
别名	GCM1;GCMA;hGCMA

产品验证



Western blot analysis of GCM1 expressed in HepG2 cells, HeLa cells using GCM1 Rabbit pAb at 1:1000. Secondary antibody: HRP Goat Anti-Rabbit IgG (H+L) at 1:5000. Lysates/proteins: 30ug per lane. Blocking buffer: 5% non-fat dry milk in TBST. Detection: ECL Enhanced Kit. Exposure time: 120s.

实验步骤

访问官网浏览详情: www.ablybio.cn