

PARP3 Rabbit pAb

货号: **AYP16391**

产品信息

反应	Human,Rat
宿主	Rabbit
克隆性	Polyclonal
预测反应	
应用	WB IF/ICC
推荐浓度	WB: 1:500 - 1:1000 IF/ICC: 1:50 - 1:100
理论分子量	60kDa
实测分子量	60kDa
形式	Liquid
保存条件	Store at -20°C. Avoid freeze / thaw cycles. Buffer: PBS with 0.02% sodium azide,50% glycerol,pH7.3.
偶联物	Unconjugated
阳性对照	Rat liver
细胞定位	Cytoplasm,Nucleus,centriole,centrosome,cytoskeleton,microtubule organizing center
纯化	Affinity purification

抗原信息

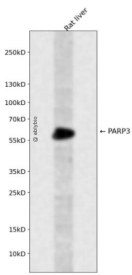
抗原信息	Recombinant fusion protein containing a sequence corresponding to amino acids 301-540 of human PARP 3 (NP_001003931.3).
序列	LAQALQAVSEQEKTVEEVPHPDRDYQLLKCQLQLLDSGAPEYKVIQTYLEQTGSNHRCPTLQHIWKVNQEGEEDRFQAH SKLGNRKLWHGTNMAVVAAILTSGLRIMPMSGGRVKGKIYFASENSKSAGYVIGMKCGAHHVGYMFLGEVALGREHHIN TDNPSLKSPPPGFDSVIARGHTEPDPTQDTELELDGQQVVPVQGPVPCPEFSSSTFSQSEYLIYQESQCRLRYLLEVHL

靶点信息

研究背景	The protein encoded by this gene belongs to the PARP family. These enzymes modify nuclear proteins by poly-ADP-ribosylation, which is required for DNA repair, regulation of apoptosis, and maintenance of genomic stability. This gene encodes the poly(ADP-ribosyl)transferase 3, which is preferentially localized to the daughter centriole throughout the cell cycle. Alternatively spliced transcript variants encoding different isoforms have been identified.
------	------------------------------------------------------------------------------------------------------------------------------------------------------------------------------------------------------------------------------------------------------------------------------------------------------------------------------------------------------------------------------------------------------------------------------------------------------------------------

基因ID	10039
基因名	PARP3
Swiss	Q9Y6F1
别名	PARP3;ADPRT3;ADPRTL2;ADPRTL3;ARTD3;IRT1;PADPRT-3

产品验证



Western blot analysis of PARP3 expressed in Rat liver using PARP3 Rabbit pAb at 1:1000. Secondary antibody: HRP Goat Anti-Rabbit IgG (H+L) at 1:5000. Lysates/proteins: 30ug per lane. Blocking buffer: 5% non-fat dry milk in TBST. Detection: ECL Enhanced Kit. Exposure time: 120s.

实验步骤

访问官网浏览详情: www.ablybio.cn