

SETD5 Rabbit pAb

货号: **AYP16389**

产品信息

反应	Human,Mouse,Rat
宿主	Rabbit
克隆性	Polyclonal
预测反应	
应用	WB IHC IF/ICC
推荐浓度	WB: 1:500 - 1:1000 IHC: 1:50 - 1:200 IF/ICC: 1:50 - 1:100
理论分子量	145kDa/147kDa/157kDa
实测分子量	158KDa
形式	Liquid
保存条件	Store at -20°C. Avoid freeze / thaw cycles. Buffer: PBS with 0.01% thiomersal,50% glycerol,pH7.3.
偶联物	Unconjugated
阳性对照	Mouse liver,Rat liver
细胞定位	nucleoplasm,nucleus
纯化	Affinity purification

抗原信息

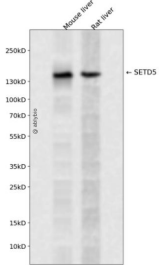
抗原信息	Recombinant fusion protein containing a sequence corresponding to amino acids 1054-1153 of human SETD5 (NP_001073986.1).
序列	PSAPQNPPQRKKVSLLEYRKRKQEAKENSAGGGGDSAQSKSKSAGAGQGSSNSVSDTGAHGVQGSARTPSSPHKKFS PSHSSMSHLEAVSPSDSRGTSS

靶点信息

研究背景	This function of this gene has yet to be determined but mutations in this gene have been associated with autosomal dominant mental retardation-23. Alternative splicing results in multiple transcript variants encoding different isoforms.
基因ID	55209

基因名	SETD5
Swiss	Q9C0A6
别名	SETD5

产品验证



Western blot analysis of SETD5 expressed in Mouse liver,Rat liver using SETD5 Rabbit pAb at 1:1000. Secondary antibody: HRP Goat Anti-Rabbit IgG (H+L) at 1:5000. Lysates/proteins: 30ug per lane. Blocking buffer: 5% non-fat dry milk in TBST. Detection: ECL Enhanced Kit. Exposure time: 120s.

实验步骤

访问官网浏览详情: www.ablybio.cn