

PHKG2 Rabbit pAb

货号: **AYP16376**

产品信息

反应	Human,Mouse,Rat
宿主	Rabbit
克隆性	Polyclonal
预测反应	
应用	WB IF/ICC
推荐浓度	WB: 1:500 - 1:2000 IF/ICC: 1:50 - 1:200
理论分子量	43kDa/46kDa
实测分子量	46kDa
形式	Liquid
保存条件	Store at -20°C. Avoid freeze / thaw cycles. Buffer: PBS with 0.02% sodium azide,50% glycerol,pH7.3.
偶联物	Unconjugated
阳性对照	MCF7,22RV1,HepG2,Jurkat,293T,Mouse liver,Rat liver
细胞定位	cytosol,phosphorylase kinase complex
纯化	Affinity purification

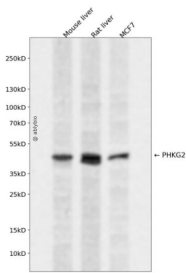
抗原信息

抗原信息	Recombinant fusion protein containing a sequence corresponding to amino acids 237-406 of human PHK G2 (NP_000285.1).
序列	RQILMLRMIMEGQYQFSSPEWDDRSSTVKDLISRLLQVDPEARLTAEQALQHPFFERCEGSQPWNLTQRQRFRVAVWTVL AAGRVALSTHRVRPLTKNALLRDPYALRSVRHLIDNCAFRLYGHVWKKGEQNRRAALFQHRPPGPFPIMGPEEEGDSAAIT EDEAVLVLG

靶点信息

研究背景	Phosphorylase kinase is a polymer of 16 subunits, four each of alpha, beta, gamma and delta. The alpha subunit includes the skeletal muscle and hepatic isoforms, encoded by two different genes. The beta subunit is the same in both the muscle and hepatic isoforms, and encoded by one gene. The gamma subunit also includes the skeletal muscle and hepatic isoforms, and the hepatic isoform is encoded by this gene. The delta subunit is a calmodulin and can be encoded by three different genes. The gamma subunits contain the active site of the enzyme, whereas the alpha and beta subunits have regulatory functions controlled by phosphorylation. The delta subunit mediates the dependence of the enzyme on calcium concentration. Mutations in this gene cause glycogen storage disease type 9C, also known as autosomal liver glycogenosis. Alternatively spliced transcript variants encoding different isoforms have been identified in this gene.
基因ID	5261
基因名	PHKG2
Swiss	P15735
别名	PHKG2;GSD9C

产品验证



Western blot analysis of PHKG2 expressed in Mouse liver, Rat liver, MCF7 using PHKG2 Rabbit pAb at 1:1000. Secondary antibody: HRP Goat Anti-Rabbit IgG (H+L) at 1:5000. Lysates/proteins: 30ug per lane. Blocking buffer: 5% non-fat dry milk in TBST. Detection: ECL Enhanced Kit. Exposure time: 120s.

实验步骤

访问官网浏览详情: www.ablybio.cn