

GPR68 Rabbit pAb

货号: **AYP16374**

产品信息

反应	Human,Mouse,Rat
宿主	Rabbit
克隆性	Polyclonal
预测反应	
应用	WB
推荐浓度	WB: 1:500 - 1:1000
理论分子量	41kDa
实测分子量	46KDa
形式	Liquid
保存条件	Store at -20°C. Avoid freeze / thaw cycles. Buffer: PBS with 0.02% sodium azide,50% glycerol,pH7.3.
偶联物	Unconjugated
阳性对照	293T,HL-60,U-87MG,NIH/3T3,Jurkat,Mouse brain,Mouse spleen,Mouse lung,Rat brain
细胞定位	Cell membrane,Multi-pass membrane protein
纯化	Affinity purification

抗原信息

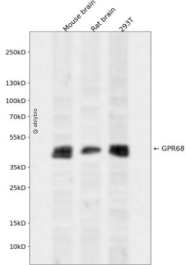
抗原信息	Recombinant fusion protein containing a sequence corresponding to amino acids 276-365 of human GPR68 (NP_003476.3).
序列	SFNCVADPVLVYCFVSETTHRDLARLRGACLAFLTCSRTGRAREAYPLGAPEASGKSGAQGEPELLTKLHPAFQTPNSPGSGGFPTGRLA

靶点信息

研究背景	The protein encoded by this gene is a G protein-coupled receptor for sphingosylphosphorylcholine. The encoded protein is a proton-sensing receptor, inactive at pH 7.8 but active at pH 6.8. Mutations in this gene are a cause of amelogenesis imperfecta.
基因ID	8111

基因名	GPR68
Swiss	Q15743
别名	GPR68;AI2A6;GPR12A;OGR1

产品验证



Western blot analysis of GPR68 expressed in Mouse brain,Rat brain,293T using GPR68 Rabbit pAb at 1: 1000. Secondary antibody: HRP Goat Anti-Rabbit IgG (H+L) at 1:5000. Lysates/proteins: 30ug per lane. Blocking buffer: 5% non-fat dry milk in TBST. Detection: ECL Enhanced Kit. Exposure time: 120s.

实验步骤

访问官网浏览详情: www.ablybio.cn