

LZTR1 Rabbit pAb

货号: **AYP16372**

产品信息

反应	Human,Mouse
宿主	Rabbit
克隆性	Polyclonal
预测反应	
应用	WB
推荐浓度	WB: 1:500 - 1:2000
理论分子量	94kDa
实测分子量	110kDa
形式	Liquid
保存条件	Store at -20°C. Avoid freeze / thaw cycles. Buffer: PBS with 0.02% sodium azide,50% glycerol,pH7.3.
偶联物	Unconjugated
阳性对照	BT-474,SKOV3
细胞定位	Golgi apparatus
纯化	Affinity purification

抗原信息

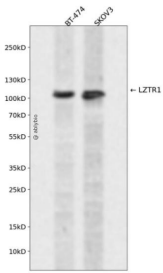
抗原信息	Recombinant fusion protein containing a sequence corresponding to amino acids 300-545 of human LZTR 1 (NP_006758.2).
序列	GGAADNTLPNELHCYDVFQTWEEVWPSSDSEVGGAEVPERACASEEVPTLTYEERVGFKKSRDVFGLDFGTSSAKQPT QPASELPSGRLFHAAAVISDAMYIFGGTVDDNNIRSGEMYRFQFSCYPKCTLHEDYGRWLWESRQFCDVEFVLGEKEECVQG HVAIVTARSRWLRRKITQARERLAQKLEQEAAPVPREAPGVAAGGARPLLHVAIREAEARPFVLMQFLYTDKIKYPRKGGH VEDVL

靶点信息

研究背景	This gene encodes a member of the BTB-kelch superfamily. Initially described as a putative transcriptional regulator based on weak homology to members of the basic leucine zipper-like family, the encoded protein subsequently has been shown to localize exclusively to the Golgi network where it may help stabilize the Golgi complex. Deletion of this gene may be associated with DiGeorge syndrome.
------	---

基因ID	8216
基因名	LZTR1
Swiss	Q8N653
别名	LZTR1;BTBD29;LZTR-1;NS10;SWNTS2

产品验证



Western blot analysis of LZTR1 expressed in BT-474,SKOV3 using LZTR1 Rabbit pAb at 1:1000. Secondary antibody: HRP Goat Anti-Rabbit IgG (H+L) at 1:5000. Lysates/proteins: 30ug per lane. Blocking buffer: 5 % non-fat dry milk in TBST. Detection: ECL Enhanced Kit. Exposure time: 120s.

实验步骤

访问官网浏览详情: www.ablybio.cn