

PPAN Rabbit pAb

货号: **AYP16362**

产品信息

反应	Human,Mouse
宿主	Rabbit
克隆性	Polyclonal
预测反应	
应用	WB IHC IF/ICC
推荐浓度	WB: 1:500 - 1:2000 IHC: 1:50 - 1:200 IF/ICC: 1:50 - 1:200
理论分子量	51kDa/53kDa/58kDa
实测分子量	53kDa/55kDa
形式	Liquid
保存条件	Store at -20°C. Avoid freeze / thaw cycles. Buffer: PBS with 0.02% sodium azide,50% glycerol,pH7.3.
偶联物	Unconjugated
阳性对照	U-87MG,Mouse heart
细胞定位	Nucleus,nucleolus
纯化	Affinity purification

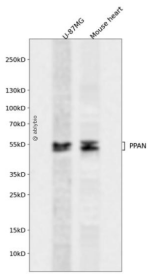
抗原信息

抗原信息	Recombinant fusion protein containing a sequence corresponding to amino acids 1-300 of human PPAN (NP_064615.3).
序列	MGQSGRSRHQKRARAQAQLRNLEAYAANPHSFVFRGCTGRNIRQLSLDVRRVMEPLTASRLQVRKKNLSLKDCVAVAGP LGVTHFLILSKTETNVYFKLMRLPGGPTLTFQVKKYSLVRDVVSSLRRHRMHEQQFAHPPLLVLNSFGPHGMHVKLMATM FQNLFPSINVHKVNLNTIKRCLLIDYNPDSQELDFRHYSIKVVPVGASRGMKLLQEKFPMMSRLQDISELLATGAGLSESE AEPDGDHNITELPQAVAGRGNMRAQQSAVRLTEIGPRMTLQLIKVQEGVGEGKVMFHSF

靶点信息

研究背景	The protein encoded by this gene is an evolutionarily conserved protein similar to yeast SSF1 as well as to the gene product of the Drosophila gene peter pan (ppan). SSF1 is known to be involved in the second step of mRNA splicing. Both SSF1 and ppan are essential for cell growth and proliferation. Exogenous expression of this gene was reported to reduce the anchorage-independent growth of some tumor cells. Read-through transcription of this gene with P2RY11/P2Y(11), an adjacent downstream gene that encodes an ATP receptor, has been found. These read-through transcripts are ubiquitously present and up-regulated during granulocyte differentiation.
基因ID	56342
基因名	
Swiss	Q9NQ55
别名	PPAN;BXDC3;SSF;SSF-1;SSF1;SSF2

产品验证



Western blot analysis of PPAN expressed in U-87MG, Mouse heart using PPAN Rabbit pAb at 1:1000. Secondary antibody: HRP Goat Anti-Rabbit IgG (H+L) at 1:5000. Lysates/proteins: 30ug per lane. Blocking buffer: 5% non-fat dry milk in TBST. Detection: ECL Enhanced Kit. Exposure time: 120s.

实验步骤

访问官网浏览详情: www.ablybio.cn