

SLC46A1 Rabbit pAb

货号: **AYP16353**

产品信息

反应	Human
宿主	Rabbit
克隆性	Polyclonal
预测反应	
应用	WB
推荐浓度	WB: 1:500 - 1:2000
理论分子量	46kDa/49kDa
实测分子量	55KDa
形式	Liquid
保存条件	Store at -20°C. Avoid freeze / thaw cycles. Buffer: PBS with 0.02% sodium azide,50% glycerol,pH7.3.
偶联物	Unconjugated
阳性对照	HL-60(Negative control),Mouse liver,Rat liver
细胞定位	Apical cell membrane,Cytoplasm,Multi-pass membrane protein
纯化	Affinity purification

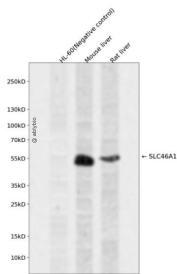
抗原信息

抗原信息	Recombinant fusion protein containing a sequence corresponding to amino acids 1-130 of human SLC46A1 (NP_001229295.1).
序列	MEGSASPPEKPRARPAAAVLCRGPVEPLVFLANFALVLQGPLTTQYLWHRFSADLGYNGTRQGGCSNRSADPTMQEVE TLTSHWTLYMNVGGFLVGLFSSTLLGAWSDSVGRRLVLAASLGLLLQALV

靶点信息

研究背景	This gene encodes a transmembrane proton-coupled folate transporter protein that facilitates the movement of folate and antifolate substrates across cell membranes, optimally in acidic pH environments. This protein is also expressed in the brain and choroid plexus where it transports folates into the central nervous system. This protein further functions as a heme transporter in duodenal enterocytes, and potentially in other tissues like liver and kidney. Its localization to the apical membrane or cytoplasm of intestinal cells is modulated by dietary iron levels. Mutations in this gene are associated with autosomal recessive hereditary folate malabsorption disease. Alternatively spliced transcript variants encoding different isoforms have been described for this gene.
基因ID	113235
基因名	SLC46A1
Swiss	Q96NT5
别名	SLC46A1;G21;HCP1;PCFT

产品验证



Western blot analysis of SLC46A1 expressed in HL-60(Negative control), Mouse liver, Rat liver using SLC46A1 Rabbit pAb at 1:1000. Secondary antibody: HRP Goat Anti-Rabbit IgG (H+L) at 1:5000. Lysates/proteins: 30ug per lane. Blocking buffer: 5% non-fat dry milk in TBST. Detection: ECL Enhanced Kit. Exposure time: 120s.

实验步骤

访问官网浏览详情: www.ablybio.cn