

BBS2 Rabbit pAb

货号: **AYP16347**

产品信息

反应	Mouse,Rat
宿主	Rabbit
克隆性	Polyclonal
预测反应	
应用	WB
推荐浓度	WB: 1:500 - 1:2000
理论分子量	79kDa
实测分子量	100kDa
形式	Liquid
保存条件	Store at -20°C. Avoid freeze / thaw cycles. Buffer: PBS with 0.02% sodium azide,50% glycerol,pH7.3.
偶联物	Unconjugated
阳性对照	Mouse testis,Mouse liver,Mouse kidney,Rat liver,Rat brain,Rat lung
细胞定位	Cell projection,Cytoplasm,centriolar satellite,centrosome,cilium membrane,cytoskeleton,microtubule organizing center
纯化	Affinity purification

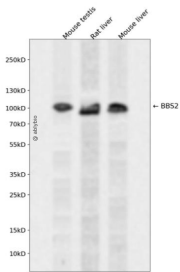
抗原信息

抗原信息	Recombinant fusion protein containing a sequence corresponding to amino acids 1-96 of human BBS2 (NP_114091.3).
序列	MLLPVFTLKRHKISPRMVAIGRYDGHPCLA AATQTGKVFHNP HTRNQHV SASRVFQSPLESDVSL LNINQAVSCLTAGV LNPELG YDALLVGT

靶点信息

研究背景	This gene is a member of the Bardet-Biedl syndrome (BBS) gene family. Bardet-Biedl syndrome is an autosomal recessive disorder characterized by severe pigmentary retinopathy, obesity, polydactyly, renal malformation and mental retardation. The proteins encoded by BBS gene family members are structurally diverse and the similar phenotypes exhibited by mutations in BBS gene family members is likely due to their shared roles in cilia formation and function. Many BBS proteins localize to the basal bodies, ciliary axonemes, and pericentriolar regions of cells. BBS proteins may also be involved in intracellular trafficking via microtubule-related transport. The protein encoded by this gene forms a multiprotein BBSome complex with seven other BBS proteins.
基因ID	583
基因名	BBS2
Swiss	Q9BXC9
别名	BBS2;BBS;RP74

产品验证



Western blot analysis of BBS2 expressed in Mouse testis, Rat liver, Mouse liver using BBS2 Rabbit pAb at 1:1000. Secondary antibody: HRP Goat Anti-Rabbit IgG (H+L) at 1:5000. Lysates/proteins: 30ug per lane. Blocking buffer: 5% non-fat dry milk in TBST. Detection: ECL Enhanced Kit. Exposure time: 120s.

实验步骤

访问官网浏览详情: www.ablybio.cn