

NR2E1/TLX Rabbit pAb

货号: **AYP16336**

产品信息

反应	Human,Mouse
宿主	Rabbit
克隆性	Polyclonal
预测反应	
应用	WB IF/ICC IP
推荐浓度	WB: 1:500 - 1:2000 IF/ICC: 1:50 - 1:100 IP: 1:50 - 1:100
理论分子量	42kDa/46kDa
实测分子量	43kDa
形式	Liquid
保存条件	Store at -20°C. Avoid freeze / thaw cycles. Buffer: PBS with 0.02% sodium azide,50% glycerol,pH7.3.
偶联物	Unconjugated
阳性对照	HL-60,HepG2,U-251MG,Jurkat,Mouse liver
细胞定位	Nucleus
纯化	Affinity purification

抗原信息

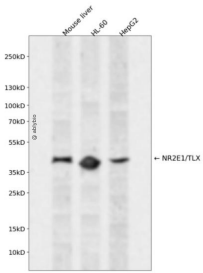
抗原信息	Recombinant fusion protein containing a sequence corresponding to amino acids 106-385 of human NR2E1/TLX (NP_003260.1).
序列	YFRGHKEENGAAAHFPSAALPAPAFFTAVTQLEPHGLELAAVSTTPERQTLVSLAQPTPKYPHEVNGTPMYLYEVATESVCE SAARLLFMSIKWAKSVPAFSTLSLQDQLMLLEDAWRELFVLGIAQWAI PVDANTLLAVSGMNGDNTDSQKLNKIIEIQAL QEVVARFRQLRLDATEFACKCIVTFKAVPTHSGSELRSFRNAAAIAALQDEAQLTLNSYIHTRYPTQPCRFGKLLLLL PALRS ISPSTIEEVFFKKTIGNVPITRLLSDMYKSSDI

靶点信息

研究背景	The protein encoded by this gene is an orphan receptor involved in retinal development. The encoded protein also regulates adult neural stem cell proliferation and may be involved in control of aggressive behavior. Two transcript variants encoding different isoforms have been found for this gene.
------	---

基因ID	7101
基因名	NR2E1
Swiss	Q9Y466
别名	NR2E1;TLL;TLX;XTLL

产品验证



Western blot analysis of NR2E1/TLX expressed in Mouse liver,HL-60,HepG2 using NR2E1/TLX Rabbit p Ab at 1:1000. Secondary antibody: HRP Goat Anti-Rabbit IgG (H+L) at 1:5000. Lysates/proteins: 30ug per lane. Blocking buffer: 5% non-fat dry milk in TBST. Detection: ECL Enhanced Kit. Exposure time: 1 20s.

实验步骤

访问官网浏览详情: www.ablybio.cn