

# THAP1 Rabbit pAb

货号: **AYP16330**

## 产品信息

反应	Human,Mouse,Rat
宿主	Rabbit
克隆性	Polyclonal
预测反应	
应用	WB IF/ICC
推荐浓度	<b>WB:</b> 1:500 - 1:2000 <b>IF/ICC:</b> 1:50 - 1:200
理论分子量	6kDa/24kDa
实测分子量	25kDa
形式	Liquid
保存条件	Store at -20°C. Avoid freeze / thaw cycles. Buffer: PBS with 0.02% sodium azide,50% glycerol,pH7.3.
偶联物	Unconjugated
阳性对照	HeLa,Mouse liver,Mouse thymus,Rat liver
细胞定位	Nucleus,PML body,nucleoplasm
纯化	Affinity purification

## 抗原信息

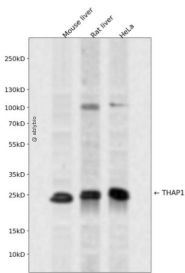
抗原信息	Recombinant fusion protein containing a sequence corresponding to amino acids 1-213 of human THAP1 (NP_060575.1).
序列	MVQSCSAYGCKNRYDKDKPVSFHKFPLTRPSLCKEWEAAVRRKNFKPTKYSSICSEHFTPDCFKRECNNKLLKENAVPTIF LCTEPHDKKEDLLEPQEQLPPPPLPPVSVQVDAIAGLLMPPLQTPVNLSVFCDHNYTVEDTMHQRKRIHQLEQQVEKLRKK LKTAQQRCCRQERQLEKLKEVVFHQEKDQVSEKDDVSEKGYVILPNDYFEIVEVPA

## 靶点信息

研究背景	The protein encoded by this gene contains a THAP domain, a conserved DNA-binding domain. This protein colocalizes with the apoptosis response protein PAWR/PAR-4 in promyelocytic leukemia (PML) nuclear bodies, and functions as a proapoptotic factor that links PAWR to PML nuclear bodies. Alternatively spliced transcript variants encoding distinct isoforms have been observed.
------	---

基因ID	55145
基因名	THAP1
Swiss	Q9NVV9
别名	THAP1;DYT6

## 产品验证



Western blot analysis of THAP1 expressed in Mouse liver,Rat liver,HeLa using THAP1 Rabbit pAb at 1:10 00. Secondary antibody: HRP Goat Anti-Rabbit IgG (H+L) at 1:5000. Lysates/proteins: 30ug per lane. Bl ocking buffer: 5% non-fat dry milk in TBST. Detection: ECL Enhanced Kit. Exposure time: 120s.

## 实验步骤

访问官网浏览详情: [www.ablybio.cn](http://www.ablybio.cn)