

RPS6KL1 Rabbit pAb

货号: **AYP16320**

产品信息

反应	Human,Mouse,Rat
宿主	Rabbit
克隆性	Polyclonal
预测反应	
应用	WB IF/ICC
推荐浓度	WB: 1:500 - 1:1000 IF/ICC: 1:50 - 1:200
理论分子量	28kDa/59kDa/60kDa
实测分子量	60KDa
形式	Liquid
保存条件	Store at -20°C. Avoid freeze / thaw cycles. Buffer: PBS with 0.01% thiomersal,50% glycerol,pH7.3.
偶联物	Unconjugated
阳性对照	Rat brain
细胞定位	
纯化	Affinity purification

抗原信息

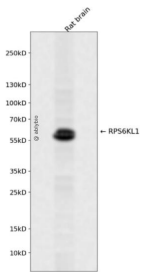
抗原信息	Recombinant fusion protein containing a sequence corresponding to amino acids 12-122 of human RPS6KL1 (NP_113652.2).
序列	PGLEPEPCSRARSQAHVYLEQIRNRVALGVPDMTKRDYLVDAATQIRLALERDVSEDEYAAFNHYQNGVDVLLRGIHVDPN KERREAVKLIKTKYLRRAEEIFNCHLQRPL

靶点信息

研究背景	Predicted to enable ATP binding activity; protein serine kinase activity; and protein serine/threonine kinase activity. Predicted to be involved in protein phosphorylation. Predicted to be located in ribosome.
基因ID	83694

基因名	RPS6KL1
Swiss	Q9Y6S9
别名	RPS6KL1;RSKL2

产品验证



Western blot analysis of RPS6KL1 expressed in Rat brain using RPS6KL1 Rabbit pAb at 1:1000. Secondary antibody: HRP Goat Anti-Rabbit IgG (H+L) at 1:5000. Lysates/proteins: 30ug per lane. Blocking buffer: 5% non-fat dry milk in TBST. Detection: ECL Enhanced Kit. Exposure time: 120s.

实验步骤

访问官网浏览详情: www.ablybio.cn