

ELF2 Rabbit pAb

货号: **AYP16319**

产品信息

反应	Human,Mouse
宿主	Rabbit
克隆性	Polyclonal
预测反应	
应用	WB
推荐浓度	WB: 1:500 - 1:2000
理论分子量	54kDa/56kDa/57kDa/62kDa/63kDa
实测分子量	64kDa
形式	Liquid
保存条件	Store at -20°C. Avoid freeze / thaw cycles. Buffer: PBS with 0.02% sodium azide,50% glycerol,pH7.3.
偶联物	Unconjugated
阳性对照	HL-60,A-549,MCF7,Jurkat
细胞定位	Nucleus
纯化	Affinity purification

抗原信息

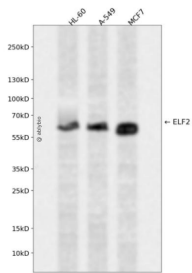
抗原信息	Recombinant fusion protein containing a sequence corresponding to amino acids 1-140 of human ELF2 (N P_006865.1).
序列	MATSLHEGPTNQLDLLIRAVEASVHSSNAHCTDKTIEAAEALLHMESPTCLRDSRSPVEVVFVPPCVSTPEFIHAAMRPDVITE TVVEVSTEESEPMDTSP IPTSPDSHEPMKKKKVGRKPKTQQSPISNGSPELGIKKKP

靶点信息

研究背景	Isoform 1 transcriptionally activates the LYN and BLK promoters and acts synergistically with RUNX1 to tr ansactivate the BLK promoter.; Isoform 2 may function in repression of RUNX1-mediated transactivation.
基因ID	1998
基因名	ELF2

Swiss	Q15723
别名	ELF2;EU32;NERF;NERF-1A;NERF-1B;NERF-1a;b;NERF-2

产品验证



Western blot analysis of ELF2 expressed in HL-60,A-549,MCF7 using ELF2 Rabbit pAb at 1:1000. Secondary antibody: HRP Goat Anti-Rabbit IgG (H+L) at 1:5000. Lysates/proteins: 30ug per lane. Blocking buffer: 5% non-fat dry milk in TBST. Detection: ECL Enhanced Kit. Exposure time: 120s.

实验步骤

访问官网浏览详情: www.ablybio.cn