

WIPI2 Rabbit pAb

货号: **AYP16297**

产品信息

反应	Human,Mouse,Rat
宿主	Rabbit
克隆性	Polyclonal
预测反应	
应用	WB
推荐浓度	WB: 1:500 - 1:1000
理论分子量	42kDa/46kDa/47kDa/48kDa/49kDa
实测分子量	49KDa
形式	Liquid
保存条件	Store at -20°C. Avoid freeze / thaw cycles. Buffer: PBS with 0.05% proclin300,50% glycerol,pH7.3.
偶联物	Unconjugated
阳性对照	MCF7,Mouse brain,Rat testis
细胞定位	Cytoplasmic side,Peripheral membrane protein,Preautophagosomal structure membrane
纯化	Affinity purification

抗原信息

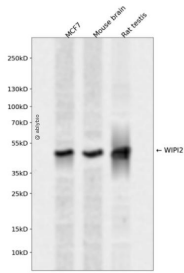
抗原信息	Recombinant fusion protein containing a sequence corresponding to amino acids 187-436 of human WIPI 2 (NP_057087.2).
序列	LAALAFDASGTKLATASEKGTVIRVFSIPEGQKLFEFRRGVKRCVCSICSLAFSMDGMFLSASSNTETVHIFKLETVKEKPPEE PTTWTGYFGKVLMASTSYLPSQVTEMFNQGRAFATVRLPFCGHKNICSLATIQIPRLLVGAADGYLYMYNLDPPQEGGECA LMKQHRLDGSLETTNEILDSASHDCPLVTQTYGAAAGKGTYPSSPTRLAYTDDLGAVGACLEDEASALRLDEDESEHPP MILRTD

靶点信息

研究背景	WD40 repeat proteins are key components of many essential biologic functions. They regulate the assembly of multiprotein complexes by presenting a beta-propeller platform for simultaneous and reversible protein-protein interactions. Members of the WIPI subfamily of WD40 repeat proteins, such as WIPI2, have a 7-bladed propeller structure and contain a conserved motif for interaction with phospholipids (Proikas-Cezanne et al., 2004 [PubMed 15602573]).[supplied by OMIM, Mar 2008]
------	---

基因ID	26100
基因名	WIPI2
Swiss	Q9Y4P8
别名	WIPI2;ATG18B;Atg21;CGI-50;WIPI-2

产品验证



Western blot analysis of WIPI2 expressed in MCF7, Mouse brain, Rat testis using WIPI2 Rabbit pAb at 1:1000. Secondary antibody: HRP Goat Anti-Rabbit IgG (H+L) at 1:5000. Lysates/proteins: 30ug per lane. Blocking buffer: 5% non-fat dry milk in TBST. Detection: ECL Enhanced Kit. Exposure time: 120s.

实验步骤

访问官网浏览详情: www.ablybio.cn