

CYP2F1 Rabbit pAb

货号: **AYP16289**

产品信息

反应	Human,Mouse,Rat
宿主	Rabbit
克隆性	Polyclonal
预测反应	
应用	WB IHC
推荐浓度	WB: 1:500 - 1:2000 IHC: 1:50 - 1:200
理论分子量	36kDa/55kDa
实测分子量	46-54kDa
形式	Liquid
保存条件	Store at -20°C. Avoid freeze / thaw cycles. Buffer: PBS with 0.02% sodium azide,50% glycerol,pH7.3.
偶联物	Unconjugated
阳性对照	SW620,BT-474,Mouse lung,Mouse liver,Rat liver,Rat brain
细胞定位	Endoplasmic reticulum membrane,Microsome membrane,Peripheral membrane protein
纯化	Affinity purification

抗原信息

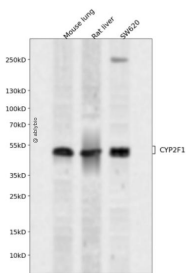
抗原信息	Recombinant fusion protein containing a sequence corresponding to amino acids 100-290 of human CYP2 F1 (NP_000765.2).
序列	DYPAFFNFTKGNIGAFSSGDRWKVLRQFSIQILRNFGMGKRSIEERILEEGSFLLAELRKTEGEPFDPTFVLSRSVSNIIICSVL FGSRFDYDDERLLTIIRLINDNFQIMSSPWGELYDIFPSLLDWVPGPHQRIFQNFKCLRDLIAHSVHDHQASLDPRSPRDFI QCFLTKMAEEKEDPLSHFHMDTLLM

靶点信息

研究背景	This gene encodes a member of the cytochrome P450 superfamily of enzymes. The cytochrome P450 proteins are monooxygenases which catalyze many reactions involved in drug metabolism and synthesis of cholesterol, steroids and other lipids. This protein localizes to the endoplasmic reticulum and is known to dehydrogenate 3-methylindole, an endogenous toxin derived from the fermentation of tryptophan, as well as xenobiotic substrates such as naphthalene and ethoxycoumarin. This gene is part of a large cluster of cytochrome P450 genes from the CYP2A, CYP2B and CYP2F subfamilies on chromosome 19q.
------	---

基因ID	1572
基因名	CYP2F1
Swiss	P24903
别名	CYP2F1;C2F1;CYP2F;CYPIIF1

产品验证



Western blot analysis of CYP2F1 expressed in Mouse lung,Rat liver,SW620 using CYP2F1 Rabbit pAb at 1:1000. Secondary antibody: HRP Goat Anti-Rabbit IgG (H+L) at 1:5000. Lysates/proteins: 30ug per lane. Blocking buffer: 5% non-fat dry milk in TBST. Detection: ECL Enhanced Kit. Exposure time: 120s.

实验步骤

访问官网浏览详情: www.ablybio.cn