

CSRP2 Rabbit pAb

货号: **AYP16288**

产品信息

反应	Human,Mouse
宿主	Rabbit
克隆性	Polyclonal
预测反应	
应用	WB
推荐浓度	WB: 1:500 - 1:2000
理论分子量	20kDa
实测分子量	26-30kDa
形式	Liquid
保存条件	Store at -20°C. Avoid freeze / thaw cycles. Buffer: PBS with 0.02% sodium azide,50% glycerol,pH7.3.
偶联物	Unconjugated
阳性对照	A-549,SW620,22Rv1,Mouse lung,Mouse kidney,Mouse liver
细胞定位	Nucleus
纯化	Affinity purification

抗原信息

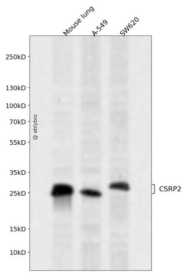
抗原信息	Recombinant fusion protein containing a sequence corresponding to amino acids 1-193 of human CSRP2 (NP_001312.1).
序列	MPVWGGGNKCGACGRTVYHAEVQCDGRSFHRCCFLCMVCRKNLDSTTVAIHDEEYCKSCYGGKYGPKGYGYGQGA GTLNMDRGERLGIKPEVQPHRPTTNPNTSKFAQKYGGAEKCSRCGDSVYAAEKIIGAGKPWHKNCFRCAKCGKSLESTT LTEKEGEIYCKGCYAKNFGPKGFGYGQGAGALVHAQ

靶点信息

研究背景	CSRP2 is a member of the CSRP family of genes, encoding a group of LIM domain proteins, which may be involved in regulatory processes important for development and cellular differentiation. CRP2 contains two copies of the cysteine-rich amino acid sequence motif (LIM) with putative zinc-binding activity, and may be involved in regulating ordered cell growth. Other genes in the family include CSRP1 and CSRP3. Alternative splicing results in multiple transcript variants.
------	--

基因ID	1466
基因名	CSRP2
Swiss	Q16527
别名	CSRP2;CRP2;LMO5;SmLIM

产品验证



Western blot analysis of CSRP2 expressed in Mouse lung,A-549,SW620 using CSRP2 Rabbit pAb at 1:1000. Secondary antibody: HRP Goat Anti-Rabbit IgG (H+L) at 1:5000. Lysates/proteins: 30ug per lane. Blocking buffer: 5% non-fat dry milk in TBST. Detection: ECL Enhanced Kit. Exposure time: 120s.

实验步骤

访问官网浏览详情: www.ablybio.cn