

FANCM Rabbit pAb

货号: AYP16270

产品信息

反应	Human
宿主	Rabbit
克隆性	Polyclonal
预测反应	
应用	WB IF/ICC
推荐浓度	WB: 1:500 - 1:2000 IF/ICC: 1:50 - 1:100
理论分子量	75kDa/229kDa/232kDa
实测分子量	75kDa/229kDa/232kDa
形式	Liquid
保存条件	Store at -20°C. Avoid freeze / thaw cycles. Buffer: PBS with 0.02% sodium azide,50% glycerol,pH7.3.
偶联物	Unconjugated
阳性对照	
细胞定位	Nucleus
纯化	Affinity purification

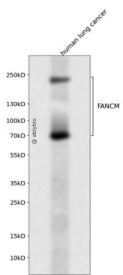
抗原信息

抗原信息	Recombinant fusion protein containing a sequence corresponding to amino acids 390-660 of human FANCM (NP_065988.1).
序列	MDGTKGMTRSKNELGRNEDFMKLYNHLECMFARTRSTSANGISAIQQGDKNKKFVYSHPKLKKLEEVVIEHFKSWNAEN TTEKKRDETRVMIFSSFRDSVQEIAEMLSQHQPIIRVMTFVGHASGKSTKGFTQKEQLEVVKQFRDGGYNTLVSTCVGEE GLDIGEVDLIICFDSQKSPIRLVQRMGRTGRKRQGRIVIILSEGREERIYNQSQSNKRSIYKAISSNRQVLHFYQRSPRMVPD GINPKLHKMFITHGVYEPEKPSRNLQRKS

靶点信息

研究背景	The Fanconi anemia complementation group (FANC) currently includes FANCA, FANCB, FANCC, FANCD1 (also called BRCA2), FANCD2, FANCE, FANCF, FANCG, FANCI, FANCI (also called BRIP1), FANCL, FANCM and FANCN (also called PALB2). The previously defined group FANCH is the same as FANCA. Fanconi anemia is a genetically heterogeneous recessive disorder characterized by cytogenetic instability, hypersensitivity to DNA crosslinking agents, increased chromosomal breakage, and defective DNA repair. The members of the Fanconi anemia complementation group do not share sequence similarity; they are related by their assembly into a common nuclear protein complex. This gene encodes the protein for complementation group M. Alternative splicing results in multiple transcript variants.
基因ID	57697
基因名	FANCM
Swiss	Q8IYD8
别名	FANCM;FAAP250;KIAA1596

产品验证



Western blot analysis of FANCM expressed in human lung cancer using FANCM Rabbit pAb at 1:1000. Secondary antibody: HRP Goat Anti-Rabbit IgG (H+L) at 1:5000. Lysates/proteins: 30ug per lane. Blocking buffer: 5% non-fat dry milk in TBST. Detection: ECL Enhanced Kit. Exposure time: 120s.

实验步骤

访问官网浏览详情: www.ablybio.cn