

KIF6 Rabbit pAb

货号: **AYP16264**

产品信息

反应	Human,Mouse
宿主	Rabbit
克隆性	Polyclonal
预测反应	
应用	WB
推荐浓度	WB: 1:500 - 1:2000
理论分子量	19kDa/30kDa/90kDa/92kDa
实测分子量	93kDa
形式	Liquid
保存条件	Store at -20°C. Avoid freeze / thaw cycles. Buffer: PBS with 0.02% sodium azide,50% glycerol,pH7.3.
偶联物	Unconjugated
阳性对照	Mouse testis
细胞定位	Cytoplasm,cytoskeleton
纯化	Affinity purification

抗原信息

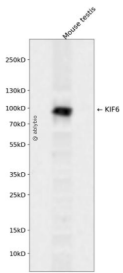
抗原信息	Recombinant fusion protein containing a sequence corresponding to amino acids 565-814 of human KIF6 (NP_659464.3).
序列	FKRDHADSVTIDDNKQILKQRFSEAKALGESINEARSKIGHLKEEITQRHIQQVALGISENMAVPLMPDQQEELKRSQLEEE KRRYKTMFTRLKALKVEIEHLQLLLMDKAKVKLQKEFEVWWAEEATNLQVNSPAVNSLDHTKPFLQTSDSQHEWSQLLSN KSSGGWEVQDQGTGRFDVCDVNARKILPSPCSPHSQKQSSTSTPLEDSIPKRPVSSIPLTGDSQTDSDIIAFIKARQSILQ KQCLGSN

靶点信息

研究背景	This gene encodes a member of a family of molecular motors which are involved in intracellular transport of protein complexes, membrane organelles, and messenger ribonucleic acid along microtubules. Kinesin s function as homodimeric molecules with two N-terminal head domains that move along microtubules and two C-terminal tail domains that interact with the transported cargo, either directly or indirectly, through adapter molecules. This gene is ubiquitously expressed in coronary arteries and other vascular tissue. A naturally occurring mutation in this gene is associated with coronary heart disease.
------	---

基因ID	221458
基因名	KIF6
Swiss	Q6ZMV9
别名	KIF6;C6orf102;dj1043E3.1;dj137F1.4;dj188D3.1

产品验证



Western blot analysis of KIF6 expressed in Mouse testis using KIF6 Rabbit pAb at 1:1000. Secondary antibody: HRP Goat Anti-Rabbit IgG (H+L) at 1:5000. Lysates/proteins: 30ug per lane. Blocking buffer: 5% non-fat dry milk in TBST. Detection: ECL Enhanced Kit. Exposure time: 120s.

实验步骤

访问官网浏览详情: www.ablybio.cn