

C4BPA Rabbit pAb

货号: AYP16256

产品信息

反应	Human,Mouse,Rat
宿主	Rabbit
克隆性	Polyclonal
预测反应	
应用	WB IHC
推荐浓度	WB: 1:1000 - 1:5000 IHC: 1:50 - 1:100
理论分子量	67kDa
实测分子量	70KDa
形式	Liquid
保存条件	Store at -20°C. Avoid freeze / thaw cycles. Buffer: PBS with 0.05% proclin300,50% glycerol,pH7.3.
偶联物	Unconjugated
阳性对照	Human plasma,Mouse plasma
细胞定位	Secreted
纯化	Affinity purification

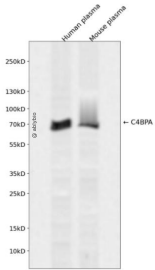
抗原信息

抗原信息	A synthetic peptide corresponding to a sequence within amino acids 500 to the C-terminus of human C4B PA (NP_000706.1).
序列	QYVEPENVTIQCDSGYGVVGPQSITCSGNRTWYPEVPKCEWETPEGCEQVLTGKRLMQCLPNPEDVKMALEVYKLSLEIE QLELQRDSARQSTLDKEL

靶点信息

研究背景	This gene encodes a member of a superfamily of proteins composed predominantly of tandemly arrayed short consensus repeats of approximately 60 amino acids. Along with a single, unique beta-chain, seven identical alpha-chains encoded by this gene assemble into the predominant isoform of C4b-binding protein, a multimeric protein that controls activation of the complement cascade through the classical pathway. The genes encoding both alpha and beta chains are located adjacent to each other on human chromosome 1 in the regulator of complement activation gene cluster. Two pseudogenes of this gene are also found in the cluster.
基因ID	722
基因名	C4BPA
Swiss	P04003
别名	C4BPA;C4BP;PRP

产品验证



Western blot analysis of C4BPA expressed in Human plasma, Mouse plasma using C4BPA Rabbit pAb at 1:1000. Secondary antibody: HRP Goat Anti-Rabbit IgG (H+L) at 1:5000. Lysates/proteins: 30ug per lane. Blocking buffer: 5% non-fat dry milk in TBST. Detection: ECL Enhanced Kit. Exposure time: 120s.

实验步骤

访问官网浏览详情: www.ablybio.cn