

CHI3L2 Rabbit pAb

货号: **AYP16254**

产品信息

反应	Human,Mouse,Rat
宿主	Rabbit
克隆性	Polyclonal
预测反应	
应用	WB
推荐浓度	WB: 1:500 - 1:2000
理论分子量	34kDa/42kDa/43kDa
实测分子量	40KDa
形式	Liquid
保存条件	Store at -20°C. Avoid freeze / thaw cycles. Buffer: PBS with 0.02% sodium azide,50% glycerol,pH7.3.
偶联物	Unconjugated
阳性对照	Jurkat
细胞定位	Secreted
纯化	Affinity purification

抗原信息

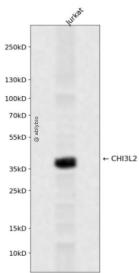
抗原信息	Recombinant fusion protein containing a sequence corresponding to amino acids 27-390 of human CHI3L2 (NP_003991.2).
序列	YKLVCFYFTNWSQDRQEPGKFTPENIDPFLCSHLIYSFASIENNKVIKDKSEVMLYQTINSLKTKNPKLKILLSIGGYLFGSKGF HPMVDSSSTRLEFINSIILFLRNHNFDGLDVSWIYPDQKENTHFTVLIHELAEAFQKDFTKSTKERLLLTAGVSAGRQ MIDN SYQVEKLAKDLDFINLLSDFDFHGSWEKPLITGHNSPLSKGWQDRGPSSYYNVEYAVGYWIHKGMPSEKVVMIPTYGHSF TLASAETTVGAPASGPGAAGPITESSGFLAYYEICQFLKGAKITRLQDQQVYPYAVKGNQWVGYDDVKSMETKVQFLKLN LGGAMIWSIDMDDFTGKSCNQGPYPLVQAVKRSLGSL

靶点信息

研究背景	The protein encoded by this gene is similar to bacterial chitinases but lacks chitinase activity. The encoded protein is secreted and is involved in cartilage biogenesis. Several transcript variants encoding different isoforms have been found for this gene.
------	---

基因ID	1117
基因名	CHI3L2
Swiss	Q15782
别名	CHI3L2;CHIL2;YKL-39;YKL39

产品验证



Western blot analysis of CHI3L2 expressed in Jurkat using CHI3L2 Rabbit pAb at 1:1000. Secondary antibody: HRP Goat Anti-Rabbit IgG (H+L) at 1:5000. Lysates/proteins: 30ug per lane. Blocking buffer: 5% non-fat dry milk in TBST. Detection: ECL Enhanced Kit. Exposure time: 120s.

实验步骤

访问官网浏览详情: www.ablybio.cn