

CEL Rabbit pAb

货号: **AYP16253**

产品信息

反应	Human,Mouse,Rat
宿主	Rabbit
克隆性	Polyclonal
预测反应	
应用	WB
推荐浓度	WB: 1:500 - 1:2000
理论分子量	71kDa/79kDa
实测分子量	71kDa
形式	Liquid
保存条件	Store at -20°C. Avoid freeze / thaw cycles. Buffer: PBS with 0.02% sodium azide,50% glycerol,pH7.3.
偶联物	Unconjugated
阳性对照	Raji,Mouse spleen
细胞定位	Secreted
纯化	Affinity purification

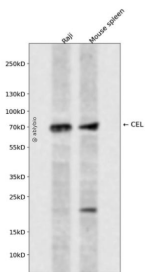
抗原信息

抗原信息	Recombinant fusion protein containing a sequence corresponding to amino acids 350-550 of human CEL (NP_001798.2).
序列	IDMPAINKGNKKVTEEDFYKLVSEFTITKGLRGAKTTFDVYTESWAQDPSQENKKKTVVDFETDVLFLVPTEIALAQHRANA KSAKTYAYLFSHPSRMPVYPKWVGADHADDIQYVFGKPFATPTGYRPQDRTVSKAMIAWWTNFAKTGDPNMGDSAVPT HWEPYTTENSGYLEITKKMGSSSMKRSLRTNFLRYWTLTYL

靶点信息

研究背景	The protein encoded by this gene is a glycoprotein secreted from the pancreas into the digestive tract and from the lactating mammary gland into human milk. The physiological role of this protein is in cholesterol and lipid-soluble vitamin ester hydrolysis and absorption. This encoded protein promotes large chylomicron production in the intestine. Also its presence in plasma suggests its interactions with cholesterol and oxidized lipoproteins to modulate the progression of atherosclerosis. In pancreatic tumoral cells, this encoded protein is thought to be sequestered within the Golgi compartment and is probably not secreted. This gene contains a variable number of tandem repeat (VNTR) polymorphism in the coding region that may influence the function of the encoded protein.
基因ID	1056
基因名	
Swiss	P19835
别名	CEL;BAL;BSDL;BSSL;CELL;CEase;FAP;FAPP;LIPA;MODY8

产品验证



Western blot analysis of CEL expressed in Raji, Mouse spleen using CEL Rabbit pAb at 1:1000. Secondary antibody: HRP Goat Anti-Rabbit IgG (H+L) at 1:5000. Lysates/proteins: 30ug per lane. Blocking buffer: 5% non-fat dry milk in TBST. Detection: ECL Enhanced Kit. Exposure time: 120s.

实验步骤

访问官网浏览详情: www.ablybio.cn