

DLX6 Rabbit pAb

货号: **AYP16248**

产品信息

反应	Human
宿主	Rabbit
克隆性	Polyclonal
预测反应	
应用	WB
推荐浓度	WB: 1:500 - 1:2000
理论分子量	19kDa/29kDa/32kDa
实测分子量	20kDa
形式	Liquid
保存条件	Store at -20°C. Avoid freeze / thaw cycles. Buffer: PBS with 0.02% sodium azide,50% glycerol,pH7.3.
偶联物	Unconjugated
阳性对照	SH-SY5Y,Jurkat,HeLa,293T
细胞定位	Nucleus
纯化	Affinity purification

抗原信息

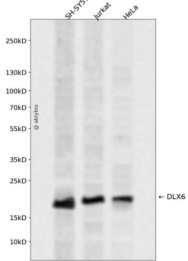
抗原信息	Recombinant fusion protein containing a sequence corresponding to amino acids 119-293 of human DLX6 (NP_005213.3).
序列	MSHSQHSPYLQSYHNSSAAAQTRGDDTDQKTTVIENGEIRFNGKGGKIRKPRTIYSSLQLQALNHRFQQTQYLALPERA ELAASLGLTQTQVKIWFQNKRSKFKLLKQGSNPHESDPLQGSAAALSPRSPALPPVWDVSASAKGVSMPPNSYMPGYSH WYSSPHQDTMQRPM

靶点信息

研究背景	This gene encodes a member of a homeobox transcription factor gene family similar to the Drosophila <i>distal-less</i> gene. This family is comprised of at least 6 different members that encode proteins with roles in forebrain and craniofacial development. This gene is in a tail-to-tail configuration with another member of the family on the long arm of chromosome 7.
基因ID	1750

基因名	DLX6
Swiss	P56179
别名	DLX6

产品验证



Western blot analysis of DLX6 expressed in SH-SY5Y, Jurkat, HeLa using DLX6 Rabbit pAb at 1:1000. Secondary antibody: HRP Goat Anti-Rabbit IgG (H+L) at 1:5000. Lysates/proteins: 30ug per lane. Blocking buffer: 5% non-fat dry milk in TBST. Detection: ECL Enhanced Kit. Exposure time: 120s.

实验步骤

访问官网浏览详情: www.ablybio.cn