

HSPA6 Rabbit pAb

货号: **AYP16238**

产品信息

反应	Human,Mouse,Rat
宿主	Rabbit
克隆性	Polyclonal
预测反应	
应用	WB IHC
推荐浓度	WB: 1:500 - 1:2000 IHC: 1:50 - 1:200
理论分子量	71kDa
实测分子量	71kDa
形式	Liquid
保存条件	Store at -20°C. Avoid freeze / thaw cycles. Buffer: PBS with 0.02% sodium azide,50% glycerol,pH7.3.
偶联物	Unconjugated
阳性对照	Jurkat,Mouse heart,Rat brain,Rat heart
细胞定位	blood microparticle,centriole,cytoplasm,cytosol,extracellular exosome,extracellular region,nucleus,plasm a membrane
纯化	Affinity purification

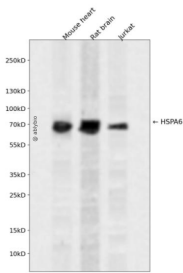
抗原信息

抗原信息	Recombinant fusion protein containing a sequence corresponding to amino acids 474-643 of human HSPA 6 (NP_002146.2).
序列	PQIEVTFDIDANGILSVTATDRSTGKANKITITNDKGRLSKEEVERMVHEAEQYKAEDEAQRDRVAAKNSLEAHVFHVKGS LQEESLRDKIPEEDRRKMQDKCREVLAWLEHNQLAEKEEYEHQKRELEQICRPIFSRLYGGPGVPGGSSCGTQARQGDP SGPIIEVD

靶点信息

研究背景	Molecular chaperone implicated in a wide variety of cellular processes, including protection of the proteome from stress, folding and transport of newly synthesized polypeptides, activation of proteolysis of misfolded proteins and the formation and dissociation of protein complexes. Plays a pivotal role in the protein quality control system, ensuring the correct folding of proteins, the re-folding of misfolded proteins and controlling the targeting of proteins for subsequent degradation. This is achieved through cycles of ATP binding, ATP hydrolysis and ADP release, mediated by co-chaperones. The affinity for polypeptides is regulated by its nucleotide bound state. In the ATP-bound form, it has a low affinity for substrate proteins. However, upon hydrolysis of the ATP to ADP, it undergoes a conformational change that increases its affinity for substrate proteins. It goes through repeated cycles of ATP hydrolysis and nucleotide exchange, which permits cycles of substrate binding and release.
基因ID	3310
基因名	HSPA6
Swiss	P17066
别名	HSPA6;HSP70B

产品验证



Western blot analysis of HSPA6 expressed in Mouse heart, Rat brain, Jurkat using HSPA6 Rabbit pAb at 1:1000. Secondary antibody: HRP Goat Anti-Rabbit IgG (H+L) at 1:5000. Lysates/proteins: 30ug per lane. Blocking buffer: 5% non-fat dry milk in TBST. Detection: ECL Enhanced Kit. Exposure time: 120s.

实验步骤

访问官网浏览详情: www.ablybio.cn