

# RCN2 Rabbit pAb

货号: **AYP16231**

## 产品信息

反应	Human,Mouse,Rat
宿主	Rabbit
克隆性	Polyclonal
预测反应	
应用	WB
推荐浓度	<b>WB:</b> 1:500 - 1:2000
理论分子量	36kDa/39kDa
实测分子量	40kDa
形式	Liquid
保存条件	Store at -20°C. Avoid freeze / thaw cycles. Buffer: PBS with 0.02% sodium azide,50% glycerol,pH7.3.
偶联物	Unconjugated
阳性对照	HeLa,NCI-H460,U-251MG,MCF7
细胞定位	Endoplasmic reticulum lumen
纯化	Affinity purification

## 抗原信息

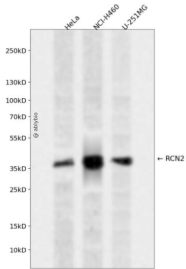
抗原信息	Recombinant fusion protein containing a sequence corresponding to amino acids 23-180 of human RCN2 (NP_002893.1).
序列	GKAEELHYPLGERRSDYDREALLGVQEDVDEYVKLGHEEQKRLQAIKKIDLDSDGFLTESELSSWIQMSFKHYAMQEA KQFVEYDKNSDDTVTWDEYNIQMYDRVIDFDENTALDDAEEESFRKLHLKDKKRFKANQDSGPGLSLEEFIAFEHP

## 靶点信息

研究背景	The protein encoded by this gene is a calcium-binding protein located in the lumen of the ER. The protein contains six conserved regions with similarity to a high affinity Ca(+2)-binding motif, the EF-hand. This gene maps to the same region as type 4 Bardet-Biedl syndrome, suggesting a possible causative role for this gene in the disorder. Alternatively spliced transcript variants encoding different isoforms have been found for this gene.
基因ID	5955

基因名	RCN2
Swiss	Q14257
别名	RCN2;E6BP;ERC-55;ERC55;TCBP49

## 产品验证



Western blot analysis of RCN2 expressed in HeLa, NCI-H460, U-251MG using RCN2 Rabbit pAb at 1:1000. Secondary antibody: HRP Goat Anti-Rabbit IgG (H+L) at 1:5000. Lysates/proteins: 30ug per lane. Blocking buffer: 5% non-fat dry milk in TBST. Detection: ECL Enhanced Kit. Exposure time: 120s.

## 实验步骤

访问官网浏览详情: [www.ablybio.cn](http://www.ablybio.cn)