

CLIP1 Rabbit pAb

货号: **AYP16230**

产品信息

反应	Human,Mouse,Rat
宿主	Rabbit
克隆性	Polyclonal
预测反应	
应用	WB
推荐浓度	WB: 1:500 - 1:2000
理论分子量	156kDa/160kDa/162kDa
实测分子量	162kDa
形式	Liquid
保存条件	Store at -20°C. Avoid freeze / thaw cycles. Buffer: PBS with 0.02% sodium azide,50% glycerol,pH7.3.
偶联物	Unconjugated
阳性对照	Mouse brain,Mouse lung,Rat brain
细胞定位	Cell projection,Cytoplasm,Cytoplasmic side,Cytoplasmic vesicle membrane,Peripheral membrane protein, cytoskeleton,ruffle
纯化	Affinity purification

抗原信息

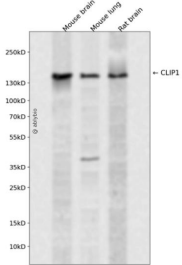
抗原信息	Recombinant fusion protein containing a sequence corresponding to amino acids 1228-1427 of human CLIP1 (NP_002947.1).
序列	SALLTEKDAELEKLRNEVTVLRGENASAKSLHSVVTLES DKVKLELKVKNLELQLKENKRQLSSSSGNTDTQAEDEDERAQ ESQIDFLNSVIVDLQRKNQDLKMKVEMMSEAALNGNGDDLNNYDSDDQEKQSKKKPRLFCDICDCFDLHDTEDCPTQA QMSEDPHSTHHGSRGEERP YCEICEMFGHWATNCNDDETF

靶点信息

研究背景	The protein encoded by this gene links endocytic vesicles to microtubules. This gene is highly expressed in Reed-Sternberg cells of Hodgkin disease. Several transcript variants encoding different isoforms have been found for this gene.
基因ID	6249

基因名	CLIP1
Swiss	P30622
别名	CLIP1;CLIP;CLIP-170;CLIP170;CYLN1;RSN

产品验证



Western blot analysis of CLIP1 expressed in Mouse brain, Mouse lung, Rat brain using CLIP1 Rabbit pAb at 1:1000. Secondary antibody: HRP Goat Anti-Rabbit IgG (H+L) at 1:5000. Lysates/proteins: 30ug per lane. Blocking buffer: 5% non-fat dry milk in TBST. Detection: ECL Enhanced Kit. Exposure time: 120s.

实验步骤

访问官网浏览详情: www.ablybio.cn